

# DNA-PKcs Antibody

Rabbit Polyclonal

Antigen Affinity Purified

Protein ID NP\_008835.5

Catalog No. A300-517A

GeneID 5591

Lot No. A300-517A-2



<b>APPLICATIONS</b>	WB, IP
<b>SPECIES REACTIVITY</b>	Human
<b>AMOUNT</b>	100 µl
<b>CONCENTRATION</b>	200 µg/ml
<b>STORAGE/SHELF LIFE</b>	2 - 8° C / 1 year from date of receipt
<b>PHYSICAL STATE</b>	Liquid
<b>BUFFER</b>	Tris-buffered Saline containing 0.1% BSA and 0.09% Sodium Azide
<b>ISOTYPE</b>	IgG
<b>ORIGIN</b>	USA
<b>PRODUCTION PROCEDURES</b>	Antibody was affinity purified using an epitope specific to DNA-PKcs immobilized on solid support.

The epitope recognized by A300-517A maps to a region between residues 2050 and 2100 of human DNA-Dependent Protein Kinase, catalytic subunit using the numbering given in entry NP\_008835.5 (GeneID 5591).

Immunoglobulin concentration was determined by extinction coefficient: absorbance at 280 nm of 1.4 equals 1.0 mg of IgG.

**APPLICATIONS** Centrifuge tube to remove product from lid. Optimal working dilutions should be determined experimentally by the investigator. Prepare working dilution immediately before use.

Western Blot 1:1,000 - 1:10,000

Immunoprecipitation 2 - 10 µg/mg lysate

**APPLICATION NOTES** Western blot of immunoprecipitates performed using Normal Pig Serum (Cat. No. S100-020), Goat anti-Rabbit Light Chain HRP Conjugate (Cat. No. A120-113P) and 3-8% SDS-PAGE (link to IP-western blot protocol in Additional Info section below).

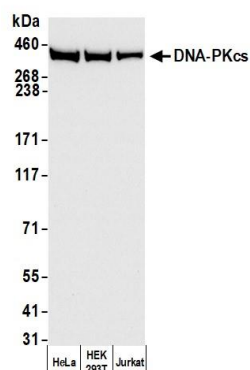
Western blot of lysates performed using standard western blot reagents and 3-8% SDS-PAGE.

**ADDITIONAL INFO** <https://www.bethyl.com/product/A300-517A>

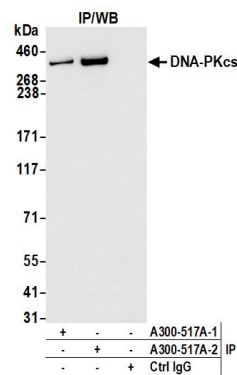
Use the link above to view SDS, a current list of citations, and other product specific information.

IP-western blot protocol: [https://www.bethyl.com/content/protocol\\_IP\\_WB](https://www.bethyl.com/content/protocol_IP_WB)

This document certifies that this product has met all of the quality control standards defined by Bethyl Laboratories, Inc.  
Eric McIntush, PhD | Chief Scientific Officer Date: February 28, 2020



**Detection of human DNA-PKcs by western blot.** *Samples:* Whole cell lysate (50  $\mu$ g) from HeLa, HEK293T, and Jurkat cells prepared using NETN lysis buffer. *Antibody:* Affinity purified rabbit anti-DNA-PKcs antibody A300-517A (lot A300-517A-2) used for WB at 0.04  $\mu$ g/ml. *Detection:* Chemiluminescence with an exposure time of 3 seconds.



**Detection of human DNA-PKcs by western blot of immunoprecipitates.** *Samples:* Whole cell lysate (1.0 mg per IP reaction; 20% of IP loaded) from HeLa cells prepared using NETN lysis buffer. *Antibodies:* Affinity purified rabbit anti-DNA-PKcs antibody A300-517A (lot A300-517A-2) used for IP at 6  $\mu$ g per reaction. DNA-PKcs was also immunoprecipitated by a previous lot of this antibody (lot A300-517A-1). For blotting immunoprecipitated DNA-PKcs, A300-517A-2 was used at 0.04  $\mu$ g/ml. *Detection:* Chemiluminescence with an exposure time of 3 seconds.