

DNA-PKcs Antibody

Rabbit Polyclonal

Antigen Affinity Purified

Protein ID NP_008835.5

Catalog No. A300-516A

GeneID 5591

Lot No. A300-516A-1



APPLICATIONS WB, IP

SPECIES REACTIVITY Human

AMOUNT 100 µl

CONCENTRATION 200 µg/ml

STORAGE/SHELF LIFE 2 - 8° C / 1 year from date of receipt

PHYSICAL STATE Liquid

BUFFER Tris-buffered Saline containing 0.1% BSA and 0.09% Sodium Azide

ISOTYPE IgG

ORIGIN USA

PRODUCTION PROCEDURES Antibody was affinity purified using an epitope specific to DNA-PKcs immobilized on solid support.

The epitope recognized by A300-516A maps to a region between residues 1850 and 1900 of human DNA-Dependent Protein Kinase, catalytic subunit using the numbering given in entry NP_008835.5 (GeneID 5591).

Immunoglobulin concentration was determined by extinction coefficient: absorbance at 280 nm of 1.4 equals 1.0 mg of IgG.

APPLICATIONS Centrifuge tube to remove product from lid. Optimal working dilutions should be determined experimentally by the investigator. Prepare working dilution immediately before use.

Western Blot 1:1,000 - 1:10,000

Immunoprecipitation 2 - 5 µg/mg lysate. Ku-80 co-immunoprecipitates with DNA-PKcs when using A300-516A.

APPLICATION NOTES Western blot of immunoprecipitates performed using Normal Pig Serum (Cat. No. S100-020), Goat anti-Rabbit Light Chain HRP Conjugate (Cat. No. A120-113P) and 3-8% SDS-PAGE (link to IP-western blot protocol in Additional Info section below).

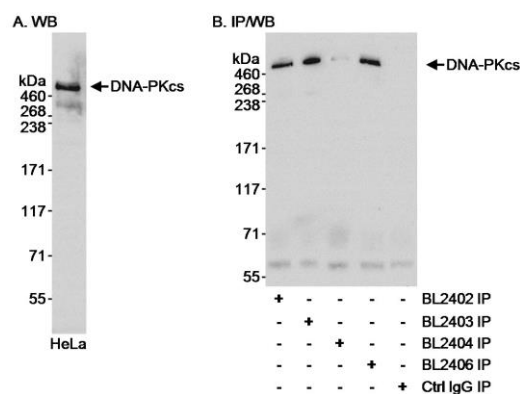
Western blot of lysates performed using standard western blot reagents and 3-8% SDS-PAGE.

ADDITIONAL INFO <https://www.bethyl.com/product/A300-516A>

Use the link above to view SDS, a current list of citations, and other product specific information.

IP-western blot protocol: https://www.bethyl.com/content/protocol_IP_WB

This document certifies that this product has met all of the quality control standards defined by Bethyl Laboratories, Inc.
Eric McIntush, PhD | Chief Scientific Officer Date: June 21, 2019



Detection of human DNA-PKcs by western blot and immunoprecipitation. *Samples:* Whole cell lysate (50 μ g for WB; 1 mg for IP) from HeLa cells. *Antibodies:* Affinity purified rabbit anti-DNA-PKcs antibody BL2402 (Cat. No. A300-516A) used at 0.1 μ g/ml for WB (A and B) and at 3 μ g/mg lysate for IP (B). DNA-PKcs was also immunoprecipitated using rabbit anti-DNA-PKcs antibodies BL2403 (Cat. No. A300-517A), BL2404 (Cat. No. A300-518A) and BL2406 (Cat. No. A300-519A). *Detection:* Chemiluminescence with an exposure time of 10 seconds.