

Roquin Antibody

Rabbit Polyclonal

Antigen Affinity Purified

Protein ID NP_742068.1

Catalog No. A300-515A

GeneID 149041

Lot No. A300-515A-1



APPLICATIONS	WB, IP
SPECIES REACTIVITY	Human
AMOUNT	100 µl
CONCENTRATION	200 µg/ml
STORAGE/SHELF LIFE	2 - 8° C / 1 year from date of receipt
PHYSICAL STATE	Liquid
BUFFER	Tris-buffered Saline containing 0.1% BSA and 0.09% Sodium Azide
ISOTYPE	IgG
ORIGIN	USA
PRODUCTION PROCEDURES	Antibody was affinity purified using an epitope specific to Roquin immobilized on solid support.

The epitope recognized by A300-515A maps to a region between residue 1075 and the C-terminus (residue 1133) of human Ring Finger and CCCH-type finder domains 1 using the numbering given in entry NP_742068.1 (GeneID 149041).

Immunoglobulin concentration was determined by extinction coefficient: absorbance at 280 nm of 1.4 equals 1.0 mg of IgG.

APPLICATIONS Centrifuge tube to remove product from lid. Optimal working dilutions should be determined experimentally by the investigator. Prepare working dilution immediately before use.

Western Blot 1:1,000 - 1:10,000

Immunoprecipitation 2 - 5 µg/mg lysate

APPLICATION NOTES Western blot of immunoprecipitates performed using Normal Pig Serum (Cat. No. S100-020), Goat anti-Rabbit Light Chain HRP Conjugate (Cat. No. A120-113P) and 4-8% SDS-PAGE (link to IP-western blot protocol in Additional Info section below).

Western blot of lysates performed using standard western blot reagents and 4-8% SDS-PAGE.

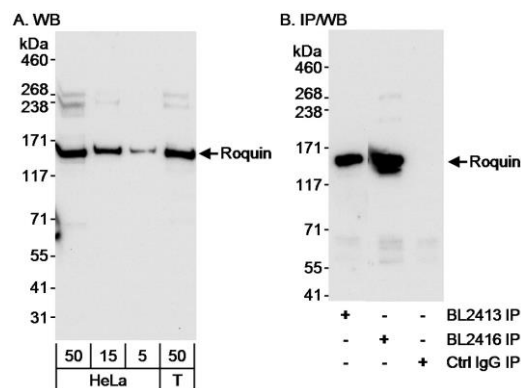
ADDITIONAL INFO

<https://www.bethyl.com/product/A300-515A>

Use the link above to view SDS, a current list of citations, and other product specific information.

IP-western blot protocol: https://www.bethyl.com/content/protocol_IP_WB

This document certifies that this product has met all of the quality control standards defined by Bethyl Laboratories, Inc.
Eric McIntush, PhD | Chief Scientific Officer Date: June 21, 2019



Detection of human Roquin by western blot and immunoprecipitation. *Samples:* A) Whole cell lysate from HeLa (5, 15 and 50 µg) and HEK293T (T, 50 µg) cells. B) Whole cell lysate (1 mg/IP; 1/4 of IP loaded) from HeLa cells. *Antibodies:* Affinity purified rabbit anti-Roquin antibody BL2416 (Cat. No. A300-515A) used at 0.04 µg/ml for WB (A and B) and at 3 µg/mg lysate for IP (B). Roquin was also immunoprecipitated using rabbit anti-Roquin antibody BL2413 (Cat. No. A300-514A) at 3 µg/mg lysate. *Detection:* Chemiluminescence with an exposure time of 30 seconds.