

# RanBP1 Antibody

Rabbit Polyclonal

Antigen Affinity Purified

Protein ID NP\_002873.1

Catalog No. A300-513A

GeneID 5902

Lot No. A300-513A-3



<b>APPLICATIONS</b>	WB, IP, IHC
<b>SPECIES REACTIVITY</b>	Human
<b>AMOUNT</b>	100 µl
<b>CONCENTRATION</b>	1000 µg/ml
<b>STORAGE/SHELF LIFE</b>	2 – 8° C / 1 year from date of receipt
<b>PHYSICAL STATE</b>	Liquid
<b>BUFFER</b>	Tris-citrate/phosphate buffer, pH 7 to 8 containing 0.09% Sodium Azide
<b>ISOTYPE</b>	IgG
<b>ORIGIN</b>	USA
<b>PRODUCTION PROCEDURES</b>	Antibody was affinity purified using an epitope specific to RanBP1 immobilized on solid support.

The epitope recognized by A300-513A maps to a region between residue 1 and 50 of human RAN Binding Protein 1 using the numbering given in entry NP\_002873.1 (GeneID 5902).

Immunoglobulin concentration was determined by extinction coefficient: absorbance at 280 nm of 1.4 equals 1.0 mg of IgG.

**APPLICATIONS** Centrifuge tube to remove product from lid. Optimal working dilutions should be determined experimentally by the investigator. Prepare working dilution immediately before use.

Western Blot 1:10,000 – 1:25,000

Immunoprecipitation 2 – 10 µg/mg lysate

Immunohistochemistry 1:2,000 to 1:10,000. Epitope retrieval with Tris-EDTA pH9.0 is recommended for FFPE tissue sections.

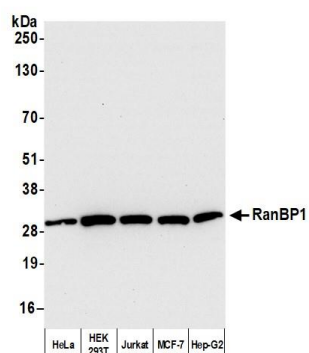
**IHC HUMAN CONTROLS** Breast Carcinoma, Colon Carcinoma, Ovarian Carcinoma

**ADDITIONAL INFO** <https://www.bethyl.com/product/A300-513A>

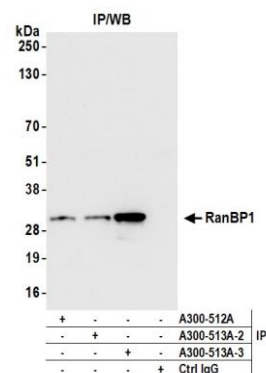
Use the link above to view SDS, a current list of citations, and other product specific information.

IP-western blot protocol: [https://www.bethyl.com/content/protocol\\_IP\\_WB](https://www.bethyl.com/content/protocol_IP_WB)

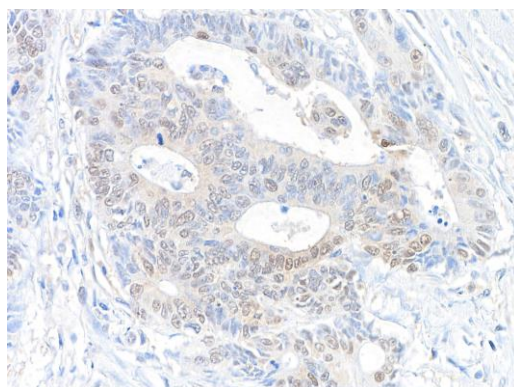
This document certifies that this product has met all of the quality control standards defined by Bethyl Laboratories, Inc.  
Eric McIntush, PhD | Chief Scientific Officer Date: October 19, 2020



**Detection of human RanBP1 by western blot.** *Samples:* Whole cell lysate (5 µg) from HeLa, HEK293T, Jurkat, MCF-7, and Hep-G2 cells prepared using NETN lysis buffer. *Antibody:* Affinity purified rabbit anti-RanBP1 antibody A300-513A Lot 3 used for WB at 0.04 µg/ml. *Detection:* Chemiluminescence with an exposure time of 10 seconds.



**Detection of human RanBP1 by western blot of immunoprecipitates.** *Samples:* Whole cell lysate (1.0 mg per IP reaction; 20% of IP loaded) from HEK293T cells prepared using NETN lysis buffer. *Antibodies:* Affinity purified rabbit anti-RanBP1 antibody A300-513A Lot 3 used for IP at 6 µg per reaction. RanBP1 was also immunoprecipitated by a previous lot of this antibody (A300-513A Lot 2) and rabbit anti-RanBP1 antibody A300-512A. For blotting immunoprecipitated RanBP1, A300-513A was used at 0.04 µg/ml. *Detection:* Chemiluminescence with an exposure time of 3 seconds.



**Detection of human RanBP1 by immunohistochemistry.** *Sample:* FFPE section of human colon carcinoma. *Antibody:* Affinity purified rabbit anti-RanBP1 (A300-513A Lot 3) used at a dilution of 1:5,000 (0.2 µg/ml). *Detection:* DAB