

AMPK alpha 1 Antibody

Rabbit Polyclonal

Antigen Affinity Purified

Protein ID BAA36547.1

Catalog No. A300-507A

GeneID 5562

Lot No. A300-507A-3



APPLICATIONS	WB, IP, IHC
SPECIES REACTIVITY	Human, Mouse
PRESUMED REACTIVITY	Based on 100% sequence identity, this antibody is predicted to react with Rat and Orangutan
AMOUNT	100 µl
CONCENTRATION	1000 µg/ml
STORAGE/SHELF LIFE	2 – 8° C / 1 year from date of receipt
PHYSICAL STATE	Liquid
BUFFER	Tris-citrate/phosphate buffer, pH 7 to 8 containing 0.09% Sodium Azide
ISOTYPE	IgG
ORIGIN	USA
PRODUCTION PROCEDURES	Antibody was affinity purified using an epitope specific to AMPK alpha 1 immobilized on solid support.

The epitope recognized by A300-507A maps to a region between residues 350 and 400 of human 5'-AMP-activated Protein Kinase, catalytic Alpha-1 chain using the numbering given in entry BAA36547.1 (GeneID 5562).

Immunoglobulin concentration was determined by extinction coefficient: absorbance at 280 nm of 1.4 equals 1.0 mg of IgG.

APPLICATIONS Centrifuge tube to remove product from lid. Optimal working dilutions should be determined experimentally by the investigator. Prepare working dilution immediately before use.

Western Blot 1:2,000 – 1:10,000

Immunoprecipitation 2 – 5 µg/mg lysate

Immunohistochemistry 1:1,000 to 1:5,000. Epitope retrieval with citrate buffer pH6.0 is recommended for FFPE tissue sections.

APPLICATION NOTES Western blot of immunoprecipitates performed using Normal Pig Serum (Cat. No. S100-020), Goat anti-Rabbit Light Chain HRP Conjugate (Cat. No. A120-113P) and 4-20% SDS-PAGE (link to IP-western blot protocol in Additional Info section below).

Western blot of lysates performed using standard western blot reagents and 4-20% SDS-PAGE.

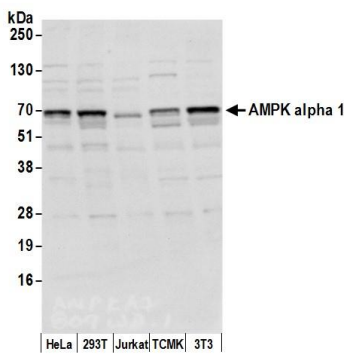
IHC HUMAN CONTROLS Smooth Muscle

ADDITIONAL INFO <https://www.bethyl.com/product/A300-507A>

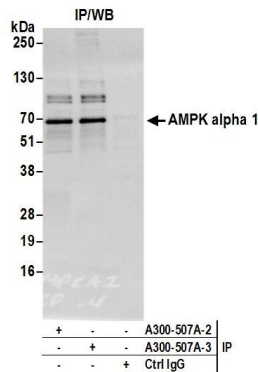
Use the link above to view SDS, a current list of citations, and other product specific information.

IP-western blot protocol: https://www.bethyl.com/content/protocol_IP_WB

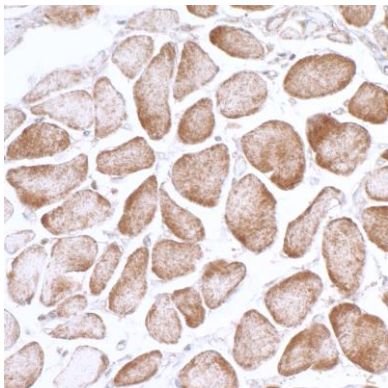
This document certifies that this product has met all of the quality control standards defined by Bethyl Laboratories, Inc.
Eric McIntush, PhD | Chief Scientific Officer Date: June 21, 2019



Detection of human and mouse AMPK alpha 1 by western blot. *Samples:* Whole cell lysate (15 µg) from HeLa, HEK293T, Jurkat, mouse TCMK-1, and mouse NIH 3T3 cells prepared using NETN lysis buffer. *Antibody:* Affinity purified rabbit anti-AMPK alpha 1 antibody A300-507A (lot A300-507A-3) used for WB at 0.1 µg/ml. *Detection:* Chemiluminescence with an exposure time of 3 seconds.



Detection of human AMPK alpha 1 by western blot of immunoprecipitates. *Samples:* Whole cell lysate (1.0 mg per IP reaction; 20% of IP loaded) from HeLa cells prepared using NETN lysis buffer. *Antibodies:* Affinity purified rabbit anti-AMPK alpha 1 antibody A300-507A (lot A300-507A-3) used for IP at 3 µg per reaction. AMPK alpha 1 was also immunoprecipitated by a previous lot of this antibody (lot A300-507A-2). For blotting immunoprecipitated AMPK alpha 1, A300-507A was used at 0.4 µg/ml. *Detection:* Chemiluminescence with an exposure time of 3 seconds.



Detection of human AMPK alpha 1 by immunohistochemistry. *Sample:* FFPE section of human smooth muscle. *Antibody:* Affinity purified rabbit anti-AMPK alpha 1 (Cat. No. A300-507A Lot 3) used at a dilution of 1:1,000 (1µg/ml). *Detection:* DAB