

SLK Antibody

Rabbit Polyclonal

Antigen Affinity Purified

Protein ID NP_055535.2

Catalog No. A300-499A

GeneID 9748

Lot No. A300-499A-1



APPLICATIONS	WB, IP
SPECIES REACTIVITY	Human
PRESUMED REACTIVITY	Based on 100% sequence identity, this antibody is predicted to react with Mouse, Rat and Guinea pig_10141
AMOUNT	100 µl
CONCENTRATION	1000 µg/ml
STORAGE/SHELF LIFE	2 - 8° C / 1 year from date of receipt
PHYSICAL STATE	Liquid
BUFFER	Tris-citrate/phosphate buffer, pH 7 to 8 containing 0.09% Sodium Azide
ISOTYPE	IgG
ORIGIN	USA
PRODUCTION PROCEDURES	Antibody was affinity purified using an epitope specific to SLK immobilized on solid support.

The epitope recognized by A300-499A maps to a region between residues 1 and 50 of human Ste20-like Kinase using the numbering given in entry NP_055535.2 (GeneID 9748).

Immunoglobulin concentration was determined by extinction coefficient: absorbance at 280 nm of 1.4 equals 1.0 mg of IgG.

APPLICATIONS Centrifuge tube to remove product from lid. Optimal working dilutions should be determined experimentally by the investigator. Prepare working dilution immediately before use.

Western Blot 1:500 - 1:5,000

Immunoprecipitation 2 - 5 µg/mg lysate

APPLICATION NOTES Western blot of immunoprecipitates performed using Normal Pig Serum (Cat. No. S100-020), Goat anti-Rabbit Light Chain HRP Conjugate (Cat. No. A120-113P) and 4-8% SDS-PAGE (link to IP-western blot protocol in Additional Info section below).

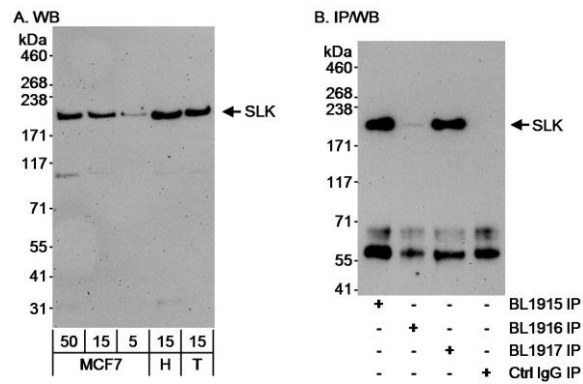
Western blot of lysates performed using standard western blot reagents and 4-8% SDS-PAGE.

ADDITIONAL INFO <https://www.bethyl.com/product/A300-499A>

Use the link above to view SDS, a current list of citations, and other product specific information.

IP-western blot protocol: https://www.bethyl.com/content/protocol_IP_WB

This document certifies that this product has met all of the quality control standards defined by Bethyl Laboratories, Inc.
Eric McIntush, PhD | Chief Scientific Officer Date: June 21, 2019



Detection of human SLK by western blot and immunoprecipitation. *Samples:* A) Whole cell lysate from MCF-7 (5, 15 and 50 μ g), HeLa (H; 15 μ g) and HEK293T (T; 15 μ g). B) Whole cell lysate (1 mg/IP; 1/4 of IP loaded) from MCF7 cells. *Antibodies:* Affinity purified rabbit anti-SLK antibody BL1915 (Cat. No. A300-499A) used at 1 μ g/ml for WB (A and B) and at 3 μ g/mg lysate for IP (B). SLK was also efficiently immunoprecipitated by BL1917 (Cat. No. A300-500A) but not by BL1916. *Detection:* Chemiluminescence with an exposure time of 3 minutes (A and B).