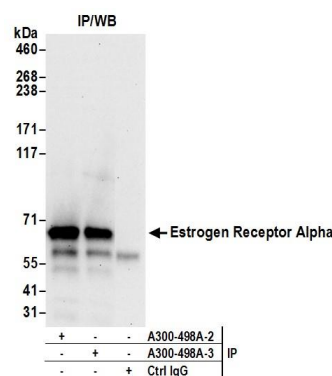


Detection of human Estrogen Receptor Alpha by western blot. *Samples:* Whole cell lysate (50 µg) from MCF-7 cells prepared using NETN lysis buffer. *Antibody:* Affinity purified rabbit anti-Estrogen Receptor Alpha antibody A300-498A (lot A300-498A-3) used for WB at 0.1 µg/ml. *Detection:* Chemiluminescence with an exposure time of 30 seconds.



Detection of human Estrogen Receptor Alpha by western blot of immunoprecipitates. *Samples:* Whole cell lysate (0.5 or 1.0 mg per IP reaction; 20% of IP loaded) from MCF-7 cells prepared using NETN lysis buffer. *Antibodies:* Affinity purified rabbit anti-Estrogen Receptor Alpha antibody A300-498A (lot A300-498A-3) used for IP at 6 µg per reaction. Estrogen Receptor Alpha was also immunoprecipitated by previous lot of this antibody A300-498A-2. For blotting immunoprecipitated Estrogen Receptor Alpha, A300-498A was used at 1 µg/ml. *Detection:* Chemiluminescence with an exposure time of 30 seconds.