

Estrogen Receptor Alpha Antibody

Rabbit Polyclonal

Antigen Affinity Purified

Protein ID P03372

Catalog No. A300-497A

GeneID 2099

Lot No. A300-497A-1



APPLICATIONS	IP
SPECIES REACTIVITY	Human
AMOUNT	100 µl
CONCENTRATION	1000 µg/ml
STORAGE/SHELF LIFE	2 – 8° C / 1 year from date of receipt
PHYSICAL STATE	Liquid
BUFFER	Tris-citrate/phosphate buffer, pH 7 to 8 containing 0.09% Sodium Azide
ISOTYPE	IgG
ORIGIN	USA
PRODUCTION PROCEDURES	Antibody was affinity purified using an epitope specific to Estrogen Receptor Alpha immobilized on solid support.

The epitope recognized by A300-497A maps to a region between residues 525 and 575 of human Estrogen Receptor Alpha using the numbering given in SwissProt entry P03372 (GeneID 2099).

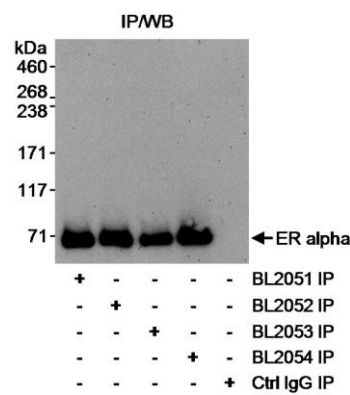
Immunoglobulin concentration was determined by extinction coefficient: absorbance at 280 nm of 1.4 equals 1.0 mg of IgG.

APPLICATIONS	Centrifuge tube to remove product from lid. Optimal working dilutions should be determined experimentally by the investigator. Prepare working dilution immediately before use.
	Western Blot Not recommended. Use rabbit anti-Estrogen Receptor Alpha antibody A300-498A.
	Immunoprecipitation 3 – 5 µg/mg lysate

APPLICATION NOTES Western blot of immunoprecipitates performed using Normal Pig Serum (Cat. No. S100-020), Goat anti-Rabbit Light Chain HRP Conjugate (Cat. No. A120-113P) and 4-8% SDS-PAGE (link to IP-western blot protocol in Additional Info section below).

ADDITIONAL INFO <https://www.bethyl.com/product/A300-497A>
Use the link above to view SDS, a current list of citations, and other product specific information.
IP-western blot protocol: https://www.bethyl.com/content/protocol_IP_WB

This document certifies that this product has met all of the quality control standards defined by Bethyl Laboratories, Inc.
Eric McIntush, PhD | Chief Scientific Officer Date: June 21, 2019



Detection of human Estrogen Receptor Alpha by immunoprecipitation. *Samples:* Whole cell lysate (1 mg for IP, 1 / 4 of IP loaded) from MCF-7 cells. *Antibodies:* Affinity purified rabbit anti-ER alpha antibodies BL2051 (Cat. No. A300-495A), BL2052 (Cat. No. A300-496A), BL2053 (Cat. No. A300-497A) and BL2054 (Cat. No. A300-498A) each used at 3 µg/mg lysate for IP. Estrogen receptor alpha was blotted using BL2054 at 0.1 µg/ml. *Detection:* Chemiluminescence with an exposure time of 3 minutes.