

CamK4 Antibody

Rabbit Polyclonal

Antigen Affinity Purified

Protein ID Q16566

Catalog No. A300-492A

GeneID 814

Lot No. A300-492A-1



APPLICATIONS	WB, IP
SPECIES REACTIVITY	Human
AMOUNT	100 µl
CONCENTRATION	1000 µg/ml
STORAGE/SHELF LIFE	2 - 8° C / 1 year from date of receipt
PHYSICAL STATE	Liquid
BUFFER	Tris-citrate/phosphate buffer, pH 7 to 8 containing 0.09% Sodium Azide
ISOTYPE	IgG
ORIGIN	USA
PRODUCTION PROCEDURES	Antibody was affinity purified using an epitope specific to CamK4 immobilized on solid support.

The epitope recognized by A300-492A maps to a region between residues 350 and 400 of human Calcium/Calmodulin-dependent Protein Kinase IV using the numbering given in Swiss-Prot entry Q16566 (GeneID 814).

Immunoglobulin concentration was determined by extinction coefficient: absorbance at 280 nm of 1.4 equals 1.0 mg of IgG.

APPLICATIONS Centrifuge tube to remove product from lid. Optimal working dilutions should be determined experimentally by the investigator. Prepare working dilution immediately before use.

Western Blot 1:5,000 - 1:15,000

Immunoprecipitation 3 - 5 µg/mg lysate

APPLICATION NOTES Western blot of immunoprecipitates performed using Normal Pig Serum (Cat. No. S100-020), Goat anti-Rabbit Light Chain HRP Conjugate (Cat. No. A120-113P) and 4-20% SDS-PAGE (link to IP-western blot protocol in Additional Info section below).

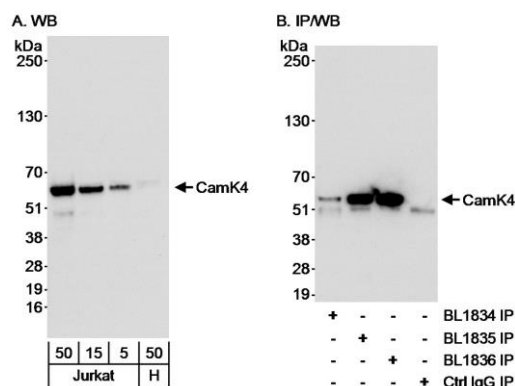
Western blot of lysates performed using standard western blot reagents and 4-20% SDS-PAGE.

ADDITIONAL INFO <https://www.bethyl.com/product/A300-492A>

Use the link above to view SDS, a current list of citations, and other product specific information.

IP-western blot protocol: https://www.bethyl.com/content/protocol_IP_WB

This document certifies that this product has met all of the quality control standards defined by Bethyl Laboratories, Inc.
Eric McIntush, PhD | Chief Scientific Officer Date: June 21, 2019



Detection of human CamK4 by western blot and immunoprecipitation. *Samples:* A) Whole cell lysate from Jurkat (5, 15 and 50 µg) and HeLa (50 µg) cells. B) Whole cell lysate (1 mg/IP; 1/4 of IP loaded/lane) from Jurkat cells. *Antibodies:* Affinity purified rabbit anti-CamK4 antibody BL1834 (Cat. No. A300-492A) used at 0.1 µg/ml for WB (A and B) and at 3 µg/mg lysate for IP (B). CamK4 was also immunoprecipitated using CamK4 antibodies BL1835 (Cat. No. A300-493A) and BL1836 (Cat. No. A300-494A) used at 3 µg/mg lysate for IP. *Detection:* Chemiluminescence with an exposure time of 30 seconds.