

# KPNB1 Antibody

Rabbit Polyclonal

Antigen Affinity Purified

Protein ID NP\_002256.2

Catalog No. A300-482A

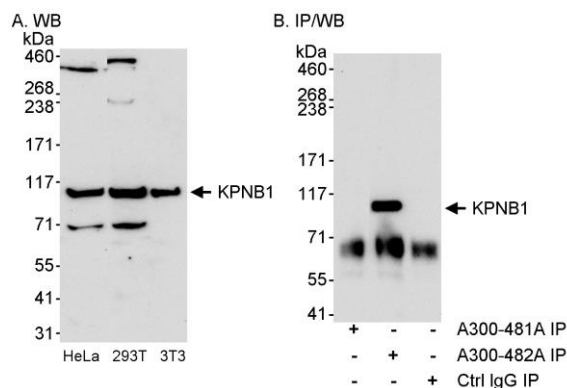
GeneID 3837

Lot No. A300-482A-1



<b>APPLICATIONS</b>	WB, IP
<b>SPECIES REACTIVITY</b>	Human, Mouse
<b>PRESUMED REACTIVITY</b>	Based on 100% sequence identity, this antibody is predicted to react with Rat
<b>AMOUNT</b>	100 µl
<b>CONCENTRATION</b>	1000 µg/ml
<b>STORAGE/SHELF LIFE</b>	2 – 8° C / 1 year from date of receipt
<b>PHYSICAL STATE</b>	Liquid
<b>BUFFER</b>	Tris-citrate/phosphate buffer, pH 7 to 8 containing 0.09% Sodium Azide
<b>ISOTYPE</b>	IgG
<b>ORIGIN</b>	USA
<b>PRODUCTION PROCEDURES</b>	<p>Antibody was affinity purified using an epitope specific to KPNB1 immobilized on solid support.</p> <p>The epitope recognized by A300-482A maps to a region between residue 825 and the C-terminus (residue 876) of human Karyopherin (importin) beta 1 using the numbering given in entry NP_002256.2 (GeneID 3837).</p> <p>Immunoglobulin concentration was determined by extinction coefficient: absorbance at 280 nm of 1.4 equals 1.0 mg of IgG.</p>
<b>APPLICATIONS</b>	<p>Centrifuge tube to remove product from lid. Optimal working dilutions should be determined experimentally by the investigator. Prepare working dilution immediately before use.</p> <p>Western Blot 1:5,000 – 1:15,000</p> <p>Immunoprecipitation 2 – 5 µg/mg lysate</p>
<b>APPLICATION NOTES</b>	<p>Western blot of immunoprecipitates performed using Normal Pig Serum (Cat. No. S100-020), Goat anti-Rabbit Light Chain HRP Conjugate (Cat. No. A120-113P) and 4-8% SDS-PAGE (link to IP-western blot protocol in Additional Info section below).</p> <p>Western blot of lysates performed using standard western blot reagents and 4-8% SDS-PAGE.</p>
<b>ADDITIONAL INFO</b>	<p><a href="https://www.bethyl.com/product/A300-482A">https://www.bethyl.com/product/A300-482A</a></p> <p>Use the link above to view SDS, a current list of citations, and other product specific information.</p> <p>IP-western blot protocol: <a href="https://www.bethyl.com/content/protocol_IP_WB">https://www.bethyl.com/content/protocol_IP_WB</a></p>

This document certifies that this product has met all of the quality control standards defined by Bethyl Laboratories, Inc.  
Eric McIntush, PhD | Chief Scientific Officer Date: June 21, 2019



**Detection of KPNB1 by western blot and immunoprecipitation.** *Samples:* A. Whole cell lysate (50 µg) from HeLa, HEK293T and mouse 3T3 cells. B. Whole cell lysate (1 mg for IP, 1/4 of IP loaded/lane) from HeLa cells. *Antibodies:* Affinity purified rabbit anti-KPNB1 antibody A300-482A used at 0.1 µg/ml for WB (A and B) and at 3 µg/mg lysate for IP (B). immunoprecipitation of KPNB1 was unsuccessful when using rabbit anti-KPNB1 antibody A300-481A at 3 µg/mg lysate. *Detection:* Chemiluminescence with an exposure time of 30 seconds (A and B).