

DDX3 Antibody

Rabbit Polyclonal

Antigen Affinity Purified

Protein ID NP_001347.2

Catalog No. A300-475A

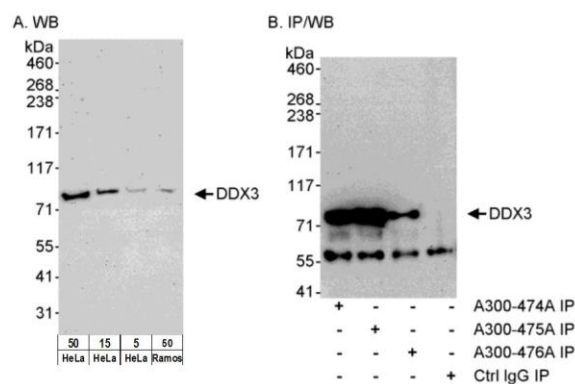
GeneID 1654

Lot No. A300-475A-1



APPLICATIONS	WB, IP
SPECIES REACTIVITY	Human
PRESUMED REACTIVITY	Based on 100% sequence identity, this antibody is predicted to react with Mouse
AMOUNT	100 µl
CONCENTRATION	1000 µg/ml
STORAGE/SHELF LIFE	2 - 8° C / 1 year from date of receipt
PHYSICAL STATE	Liquid
BUFFER	Tris-citrate/phosphate buffer, pH 7 to 8 containing 0.09% Sodium Azide
ISOTYPE	IgG
ORIGIN	USA
PRODUCTION PROCEDURES	<p>Antibody was affinity purified using an epitope specific to DDX3 immobilized on solid support.</p> <p>The epitope recognized by A300-475A maps to a region between residues 550 and 600 of human DEAD (Asp-Glu-Ala-Asp) box polypeptide 3 using the numbering given in entry NP_001347.2 (GeneID 1654).</p> <p>Immunoglobulin concentration was determined by extinction coefficient: absorbance at 280 nm of 1.4 equals 1.0 mg of IgG.</p>
APPLICATIONS	<p>Centrifuge tube to remove product from lid. Optimal working dilutions should be determined experimentally by the investigator. Prepare working dilution immediately before use.</p> <p>Western Blot 1:5,000 - 1:15,000</p> <p>Immunoprecipitation 2 - 5 µg/mg lysate</p>
APPLICATION NOTES	<p>Western blot of immunoprecipitates performed using Normal Pig Serum (Cat. No. S100-020), Goat anti-Rabbit Light Chain HRP Conjugate (Cat. No. A120-113P) and 4-8% SDS-PAGE (link to IP-western blot protocol in Additional Info section below).</p> <p>Western blot of lysates performed using standard western blot reagents and 4-8% SDS-PAGE.</p>
ADDITIONAL INFO	<p>https://www.bethyl.com/product/A300-475A</p> <p>Use the link above to view SDS, a current list of citations, and other product specific information.</p> <p>IP-western blot protocol: https://www.bethyl.com/content/protocol_IP_WB</p>

This document certifies that this product has met all of the quality control standards defined by Bethyl Laboratories, Inc.
Eric McIntush, PhD | Chief Scientific Officer Date: June 21, 2019



Detection of DDX3 by western blot and immunoprecipitation.

Samples: A. Whole cell lysate from HeLa (5, 15 and 50 µg) and Ramos (50 µg) cells. B. Whole cell lysate (1 mg/IP; 1/4 of IP loaded/lane) from HeLa cells. **Antibodies:** Affinity purified rabbit anti-DDX3 antibody BL1650 (Cat. No. A300-475A) used at 0.04 µg/ml (A) and 0.1 µg/ml (B) for western blot and at 3 µg/mg lysate for IP (B). DDX3 was also immunoprecipitated using rabbit anti-DDX3 antibodies Cat. No. A300-474A and A300-476A at 3 µg/mg lysate. **Detection:** Chemiluminescence with exposure times of 3 minutes (A and B).