

Alpha-4 Antibody

Rabbit Polyclonal

Antigen Affinity Purified

Protein ID P78318

Catalog No. A300-471A

GeneID 3476

Lot No. A300-471A-1



| | |
|------------------------------|---|
| APPLICATIONS | WB, IP |
| SPECIES REACTIVITY | Human, Mouse |
| PRESUMED REACTIVITY | Based on 100% sequence identity, this antibody is predicted to react with Rat |
| AMOUNT | 100 µl |
| CONCENTRATION | 1000 µg/ml |
| STORAGE/SHELF LIFE | 2 - 8° C / 1 year from date of receipt |
| PHYSICAL STATE | Liquid |
| BUFFER | Tris-citrate/phosphate buffer, pH 7 to 8 containing 0.09% Sodium Azide |
| ISOTYPE | IgG |
| ORIGIN | USA |
| PRODUCTION PROCEDURES | Antibody was affinity purified using an epitope specific to Alpha-4 (IGBP1) immobilized on solid support. |

The epitope recognized by A300-470A maps to a region between residue 300 and the C-terminus (residue 339) of human Protein Phosphatase 2A, regulatory subunit alpha-4 (Immunoglobulin binding protein 1) using the numbering given in SwissProt entry P78318 (GeneID 3476).

Immunoglobulin concentration was determined by extinction coefficient: absorbance at 280 nm of 1.4 equals 1.0 mg of IgG.

APPLICATIONS Centrifuge tube to remove product from lid. Optimal working dilutions should be determined experimentally by the investigator. Prepare working dilution immediately before use.

Western Blot 1:1,000 - 1:10,000

Immunoprecipitation 2 - 5 µg/mg lysate

APPLICATION NOTES Western blot of immunoprecipitates performed using Normal Pig Serum (Cat. No. S100-020), Goat anti-Rabbit Light Chain HRP Conjugate (Cat. No. A120-113P) and 4-20% SDS-PAGE (link to IP-western blot protocol in Additional Info section below).

Western blot of lysates performed using standard western blot reagents and 4-20% SDS-PAGE.

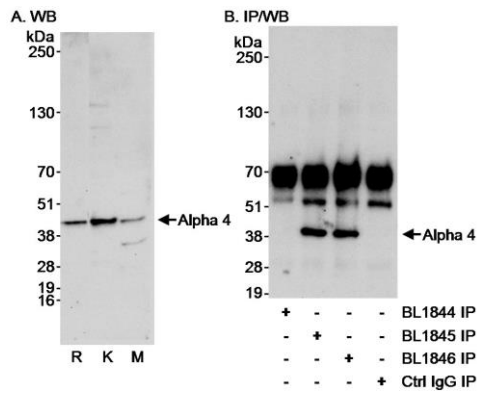
ADDITIONAL INFO <https://www.bethyl.com/product/A300-471A>

Use the link above to view SDS, a current list of citations, and other product specific information.

IP-western blot protocol: https://www.bethyl.com/content/protocol_IP_WB

This document certifies that this product has met all of the quality control standards defined by Bethyl Laboratories, Inc.
Eric McIntush, PhD | Chief Scientific Officer

Date: June 21, 2019



Detection of Alpha 4 by western blot and immunoprecipitation. *Samples:* A. Whole cell lysate (50 μ g) from Ramos (R), K-562 (K) and mouse NIH 3T3 (M) cells. B. Whole cell lysate (1 mg/IP; $\frac{1}{4}$ of IP reaction loaded/lane) from Ramos cells. *Antibodies:* Affinity purified rabbit anti-Alpha 4 antibody BL1846 (Cat. No. A300-471A) used at 0.4 μ g/ml (A) and 1 μ g/ml (B) for WB and at 3 μ g/mg lysate for IP. Alpha 4 was also immunoprecipitated by BL1845 (Cat. No. A300-470A), but not by BL1844, which are affinity purified antibodies to upstream epitopes on Alpha 4. *Detection:* Chemiluminescence with an exposure time of 30 seconds (A and B).