

CRM1 Antibody

Rabbit Polyclonal

Antigen Affinity Purified

Protein ID NP_003391.1

Catalog No. A300-469A

GeneID 7514

Lot No. A300-469A-2



APPLICATIONS	WB, IP, IHC
SPECIES REACTIVITY	Human, Mouse
AMOUNT	100 µl
CONCENTRATION	1000 µg/ml
STORAGE/SHELF LIFE	2 - 8° C / 1 year from date of receipt
PHYSICAL STATE	Liquid
BUFFER	Tris-citrate/phosphate buffer, pH 7 to 8 containing 0.09% Sodium Azide
ISOTYPE	IgG
ORIGIN	USA
PRODUCTION PROCEDURES	Antibody was affinity purified using an epitope specific to CRM1 (Exportin 1) immobilized on solid support.

The epitope recognized by A300-469A maps to a region between residue 1025 and the C-terminus (residue 1071) of human Chromosome Region Maintenance 1 (Exportin 1) using the numbering given in entry NP_003391.1 (GeneID 7514).

Immunoglobulin concentration was determined by extinction coefficient: absorbance at 280 nm of 1.4 equals 1.0 mg of IgG.

APPLICATIONS Centrifuge tube to remove product from lid. Optimal working dilutions should be determined experimentally by the investigator. Prepare working dilution immediately before use.

Western Blot 1:2,000 - 1:10,000

Immunoprecipitation 2 - 10 µg/mg lysate

Immunohistochemistry 1:1,000 - 1:5,000. Epitope retrieval with citrate buffer pH 6.0 is recommended for FFPE tissue sections.

APPLICATION NOTES Western blot of immunoprecipitates performed using Normal Pig Serum (Cat. No. S100-020), Goat anti-Rabbit Light Chain HRP Conjugate (Cat. No. A120-113P) and 4-8% SDS-PAGE (link to IP-western blot protocol in Additional Info section below).

Western blot of lysates performed using standard western blot reagents and 4-8% SDS-PAGE.

IHC HUMAN CONTROLS Breast Carcinoma, Colon Carcinoma, Ovarian Carcinoma, Prostate Carcinoma, Testicular Seminoma

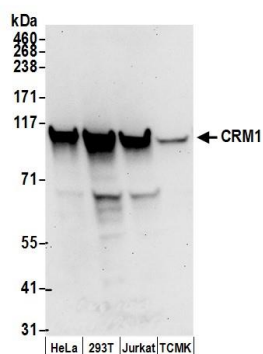
IHC MOUSE CONTROLS Squamous Cell Carcinoma, Teratoma

ADDITIONAL INFO <https://www.bethyl.com/product/A300-469A>

Use the link above to view SDS, a current list of citations, and other product specific information.

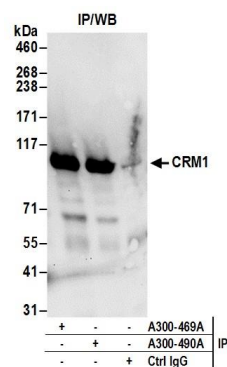
IP-western blot protocol: https://www.bethyl.com/content/protocol_IP_WB

This document certifies that this product has met all of the quality control standards defined by Bethyl Laboratories, Inc.
Eric McIntush, PhD | Chief Scientific Officer Date: June 21, 2019



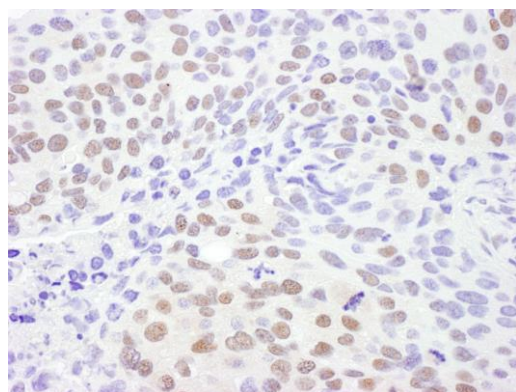
Detection of human and mouse CRM1 by western blot.

Samples: Whole cell lysate (50 µg) prepared using NETN buffer from HeLa, HEK293T, Jurkat, and mouse TCMK-1 cells. **Antibodies:** Affinity purified rabbit anti-CRM1 antibody A300-469A (lot A300-469A-2) used for WB at 0.1 µg/ml. **Detection:** Chemiluminescence with an exposure time of 30 seconds.



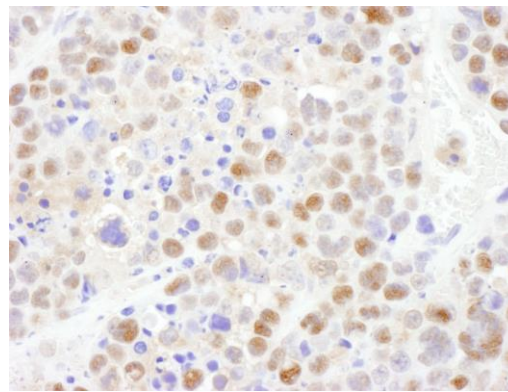
Detection of human CRM1 by western blot of immunoprecipitates.

Samples: Whole cell lysate (1 mg for IP; 20% of IP loaded) prepared using NETN buffer from HeLa and cells. **Antibodies:** Affinity purified rabbit anti-CRM1 antibody A300-469A (lot A300-469A-2) used for IP at 6 µg per reaction. CRM1 was also immunoprecipitated by rabbit anti-CRM1 antibody A300-490A. For blotting immunoprecipitated CRM1, A300-469A was used at 1 µg/ml. **Detection:** Chemiluminescence with an exposure time of 30 seconds.



Detection of human CRM1 by immunohistochemistry.

Sample: FFPE section of human lung cancer. **Antibody:** Affinity purified rabbit anti-CRM1 (Cat. No. A300-469A Lot2) used at a dilution of 1:5,000 (0.2 µg/ml). **Detection:** DAB



Detection of mouse CRM1 by immunohistochemistry.

Sample: FFPE section of mouse teratoma. **Antibody:** Affinity purified rabbit anti-CRM1 (Cat. No. A300-469A Lot2) used at a dilution of 1:1,000 (1 µg/ml). **Detection:** DAB