

MST1-2/STK3-4 Antibody

Rabbit Polyclonal

Antigen Affinity Purified Protein ID Q13188
Catalog No. A300-468A GeneID 6788
Lot No. A300-468A-1



APPLICATIONS	WB, IP, IHC
SPECIES REACTIVITY	Human, Mouse
PRESUMED REACTIVITY	Based on 100% sequence identity, this antibody is predicted to react with Rat, Zebrafish and <i>X. laevis</i>
AMOUNT	100 µl
CONCENTRATION	1000 µg/ml
STORAGE/SHELF LIFE	2 - 8° C / 1 year from date of receipt
PHYSICAL STATE	Liquid
BUFFER	Tris-citrate/phosphate buffer, pH 7 to 8 containing 0.09% Sodium Azide
ISOTYPE	IgG
ORIGIN	USA
PRODUCTION PROCEDURES	Antibody was affinity purified using an epitope specific to MST1 and MST2 immobilized on solid support.

The epitope recognized by A300-468A maps to the C-terminus of human Mammalian Sterile 20-like 2 (Serine/Threonine Kinase 3) using the numbering given in Swiss Prot entry Q13188 (GeneID 6788). The epitope is highly conserved with MST1(STK4). Consequently, A300-468A also recognizes this homolog.

Immunoglobulin concentration was determined by extinction coefficient: absorbance at 280 nm of 1.4 equals 1.0 mg of IgG.

APPLICATIONS Centrifuge tube to remove product from lid. Optimal working dilutions should be determined experimentally by the investigator. Prepare working dilution immediately before use.

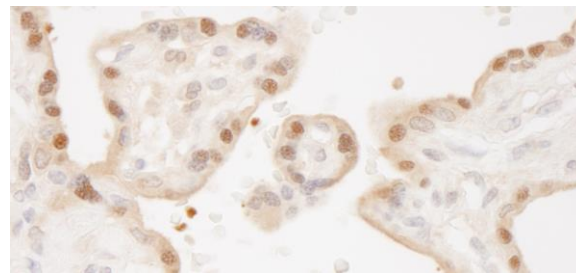
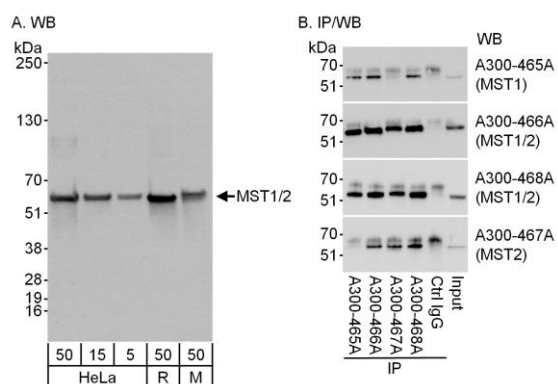
Western Blot	1:5,000 - 1:15,000
Immunoprecipitation	2 - 5 µg/mg lysate
Immunohistochemistry	1:500 - 1:2,000. Epitope retrieval with Tris-EDTA pH 9.0 is recommended for FFPE tissue sections.

APPLICATION NOTES Western blot of immunoprecipitates performed using Normal Pig Serum (Cat. No. S100-020), Goat anti-Rabbit Light Chain HRP Conjugate (Cat. No. A120-113P) and 4-20% SDS-PAGE (link to IP-western blot protocol in Additional Info section below).

IHC HUMAN CONTROLS Western blot of lysates performed using standard western blot reagents and 4-20% SDS-PAGE. Colon Carcinoma, Placenta

ADDITIONAL INFO <https://www.bethyl.com/product/A300-468A>
Use the link above to view SDS, a current list of citations, and other product specific information.
IP-western blot protocol: https://www.bethyl.com/content/protocol_IP_WB

This document certifies that this product has met all of the quality control standards defined by Bethyl Laboratories, Inc.
Eric McIntush, PhD | Chief Scientific Officer Date: June 21, 2019



Detection of MST1 and MST2 by western blot and immunoprecipitation. *Samples:* A) Whole cell lysate from HeLa (5, 15 and 50 µg), Ramos (R, 50 µg) and mouse NIH 3T3 (M, 50 µg) cells. B) Whole cell lysate (1 mg/IP reaction; 1/4 of reaction loaded/gel) from HeLa cells. *Antibodies:* Affinity purified rabbit anti-MST1/2 antibody A300-468A used at 0.1 µg/ml for WB (A and B) and 3 µg/mg lysate for IP. MST1 was immunoprecipitated using MST1 antibody A300-465A. MST2 was immunoprecipitated using MST2 antibody A300-467A. MST1 and MST2 were simultaneously immunoprecipitated using MST1/2 antibodies A300-466A and A300-468A. *Detection:* Chemiluminescence with an exposure times of 3 seconds (A and B). A300-468A recognized MST1 in IP from A300-465A and MST2 in IP from A300-467A.

Detection of human MST1 and MST2 by immunohistochemistry. *Sample:* FFPE section of human placenta. *Antibody:* Affinity purified rabbit anti-MST1/2 (Cat. No. A300-468A Lot1) used at a dilution of 1:1,000 (1 µg/ml). *Detection:* DAB