

MST1 /STK4 Antibody

Rabbit Polyclonal

Antigen Affinity Purified

Protein ID Q13043

Catalog No. A300-465A

GeneID 6789

Lot No. A300-465A-1



APPLICATIONS	WB, IP
SPECIES REACTIVITY	Human, Mouse
PRESUMED REACTIVITY	Based on 100% sequence identity, this antibody is predicted to react with Monkey
AMOUNT	100 µl
CONCENTRATION	1000 µg/ml
STORAGE/SHELF LIFE	2 - 8° C / 1 year from date of receipt
PHYSICAL STATE	Liquid
BUFFER	Tris-citrate/phosphate buffer, pH 7 to 8 containing 0.09% Sodium Azide
ISOTYPE	IgG
ORIGIN	USA
PRODUCTION PROCEDURES	Antibody was affinity purified using an epitope specific to MST1 /STK4 immobilized on solid support.

The epitope recognized by A300-465A maps to a region between residues 375 and 425 of human Mammalian Sterile 20-like 1 (Serine/Threonine Kinase 4) using the numbering given in Swiss Prot entry Q13043 (GeneID 6789).

Immunoglobulin concentration was determined by extinction coefficient: absorbance at 280 nm of 1.4 equals 1.0 mg of IgG.

APPLICATIONS Centrifuge tube to remove product from lid. Optimal working dilutions should be determined experimentally by the investigator. Prepare working dilution immediately before use.

Western Blot 1:500 - 1:2,500

Immunoprecipitation 2 - 5 µg/mg lysate

APPLICATION NOTES Western blot of immunoprecipitates performed using Normal Pig Serum (Cat. No. S100-020), Goat anti-Rabbit Light Chain HRP Conjugate (Cat. No. A120-113P) and 4-20% SDS-PAGE (link to IP-western blot protocol in Additional Info section below).

Western blot of lysates performed using standard western blot reagents and 4-20% SDS-PAGE.

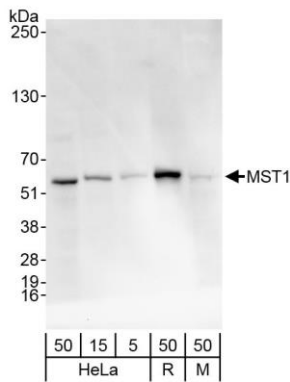
ADDITIONAL INFO <https://www.bethyl.com/product/A300-465A>

Use the link above to view SDS, a current list of citations, and other product specific information.

IP-western blot protocol https://www.bethyl.com/content/protocol_IP_WB

This document certifies that this product has met all of the quality control standards defined by Bethyl Laboratories, Inc.
Eric McIntush, PhD | Chief Scientific Officer Date: October 16, 2019

For in vitro laboratory use only. Not for any clinical, therapeutic or diagnostic use in humans or animals. Not for human or animal consumption. This product may not be resold or modified for resale without the prior written approval of Bethyl Laboratories, Inc. The information provided in this data sheet is believed to be correct but does not purport to be all-inclusive and is intended to be used as a guide. Bethyl Laboratories, Inc. shall not be liable or responsible in any way for use of either this information or the material supplied. Disposal of hazardous material may be subject to federal, state or local laws or regulations.

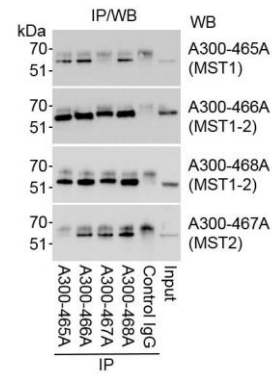


Detection of human and mouse MST1 by western blot.

Samples: Whole cell lysate from HeLa (5, 15 and 50 μ g), Ramos (R, 50 μ g) and mouse NIH 3T3 (M, 50 μ g) cells.

Antibodies: Affinity purified rabbit anti-MST1 antibody A300-465A (lot A300-465A-1) used for WB at 1 μ g/ml.

Detection: Chemiluminescence with exposure time of 30 seconds.



Detection of MST1 and MST2 by western blot of immunoprecipitates.

Samples: Whole cell lysate (1 mg/IP reaction; 1/4 of reaction loaded/gel) from HeLa cells.

Antibodies: Affinity purified rabbit anti-MST1 antibody A300-465A (lot A300-465A-1) used for IP at 3 μ g/mg lysate.

MST1 and MST2 were simultaneously immunoprecipitated using MST1-2 antibodies A300-466A and A300-468A. MST2 was immunoprecipitated using MST2 antibody A300-467A. *Detection:* Chemiluminescence with exposure time of 3 seconds. A300-465A is specific for MST1 and A300-467A is specific for MST2 as determined by reciprocal IP/WB.