

HDAC3 Antibody

Rabbit Polyclonal

Antigen Affinity Purified

Protein ID O15379

Catalog No. A300-464A

GeneID 8841

Lot No. A300-464A-1



APPLICATIONS	WB, IP, IHC
SPECIES REACTIVITY	Human, Mouse
PRESUMED REACTIVITY	Based on 100% sequence identity, this antibody is predicted to react with Rat and Orangutan
AMOUNT	100 µl
CONCENTRATION	200 µg/ml
STORAGE/SHELF LIFE	2 - 8° C / 1 year from date of receipt
PHYSICAL STATE	Liquid
BUFFER	Tris-buffered Saline containing 0.1% BSA and 0.09% Sodium Azide
ISOTYPE	IgG
ORIGIN	USA
PRODUCTION PROCEDURES	Antibody was affinity purified using an epitope specific to HDAC3 immobilized on solid support.

The epitope recognized by A300-464A maps to a region between residue 375 and the C-terminus (residue 428) of human Histone Deacetylase 3 using the numbering given in Swiss-Prot entry O15379 (GeneID 8841).

Immunoglobulin concentration was determined by extinction coefficient: absorbance at 280 nm of 1.4 equals 1.0 mg of IgG.

APPLICATIONS Centrifuge tube to remove product from lid. Optimal working dilutions should be determined experimentally by the investigator. Prepare working dilution immediately before use.

Western Blot 1:5,000 – 1:15,000

Immunoprecipitation 2 – 5 µg/mg lysate

Immunohistochemistry 1:100 – 1:500. Epitope retrieval with Tris-EDTA pH 9.0 is recommended for FFPE tissue sections.

APPLICATION NOTES Western blot of immunoprecipitates performed using Normal Pig Serum (Cat. No. S100-020), Goat anti-Rabbit Light Chain HRP Conjugate (Cat. No. A120-113P) and 4-20% SDS-PAGE (link to IP-western blot protocol in Additional Info section below).

Western blot of lysates performed using standard western blot reagents and 4-20% SDS-PAGE.

IHC HUMAN CONTROLS Breast Carcinoma, Ovarian Carcinoma, Prostate Carcinoma

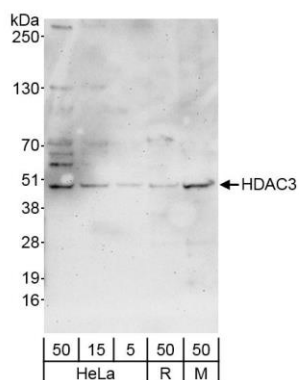
IHC MOUSE CONTROLS Renal Cell Carcinoma

ADDITIONAL INFO <https://www.bethyl.com/product/A300-464A>

Use the link above to view SDS, a current list of citations, and other product specific information.

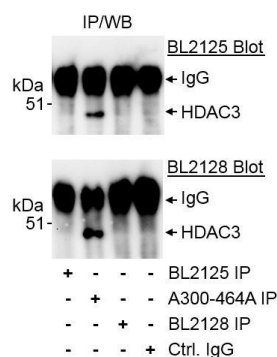
IP-western blot protocol https://www.bethyl.com/content/protocol_IP_WB

This document certifies that this product has met all of the quality control standards defined by Bethyl Laboratories, Inc.
Eric McIntush, PhD | Chief Scientific Officer Date: October 16, 2019



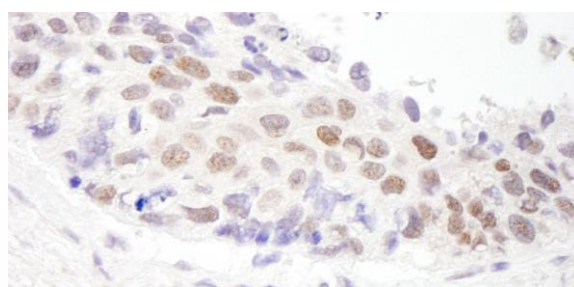
Detection of human and mouse HDAC3 by western blot.

Samples: Whole cell lysate from HeLa (5, 15 and 50 μ g), Ramos (R; 50 μ g) and mouse NIH 3T3 (M; 50 μ g) cells.
Antibodies: Affinity purified rabbit anti-HDAC3 antibody A300-464A (lot A300-464A-1) used for WB at 0.02 μ g/ml.
Detection: Chemiluminescence with exposure time of 3 minutes.



Detection of human HDAC3 by western blot of immunoprecipitates.

Samples: Whole cell lysate (1.0 mg per IP reaction; 20% of IP loaded) from HeLa cells.
Antibodies: Affinity purified rabbit anti-HDAC3 antibody A300-464A (lot A300-464A-1) used for IP at 3 μ g/mg per reaction. HDAC3 was also immunoprecipitated by rabbit anti-HDAC3 antibodies BL2125 and BL2128. For blotting immunoprecipitated HDAC3, BL2125 and BL2128 were used at 1 μ g/ml. **Detection:** Chemiluminescence with exposure times of 30 seconds.



Detection of human HDAC3 by immunohistochemistry.

Sample: FFPE section of human ovarian carcinoma.
Antibody: Affinity purified rabbit anti-HDAC3 (Cat. No. A300-464A Lot1) used at a dilution of 1:200 (1 μ g/ml).
Detection: DAB