

DDX6 Antibody

Rabbit Polyclonal

Antigen Affinity Purified Protein ID P26196

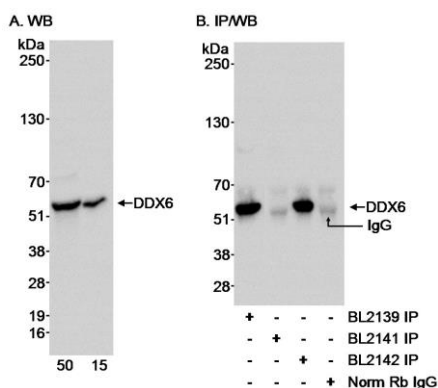
Catalog No. A300-460A GeneID 1656

Lot No. A300-460A-1

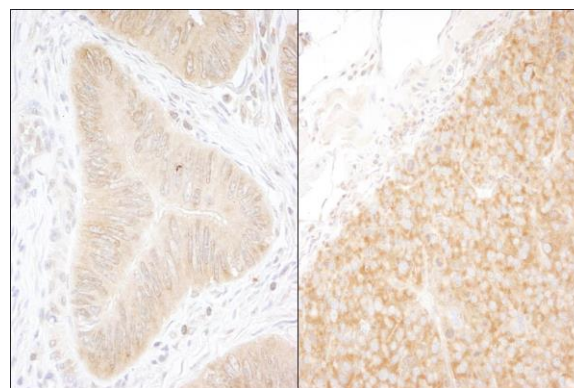


APPLICATIONS	WB, IP, IHC
SPECIES REACTIVITY	Human, Mouse
PRESUMED REACTIVITY	Based on 100% sequence identity, this antibody is predicted to react with Chicken and Orangutan
AMOUNT	100 µl
CONCENTRATION	200 µg/ml
STORAGE/SHELF LIFE	2 - 8° C / 1 year from date of receipt
PHYSICAL STATE	Liquid
BUFFER	Tris-buffered Saline containing 0.1% BSA and 0.09% Sodium Azide
ISOTYPE	IgG
ORIGIN	USA
PRODUCTION PROCEDURES	<p>Antibody was affinity purified using an epitope specific to DDX6 immobilized on solid support.</p> <p>The epitope recognized by A300-460A maps to a region between residues 1 and 50 of human DEAD (Asp-Glu-Ala-Asp) box polypeptide 6 using the numbering given Swiss-Prot entry P26196 (GeneID 1656).</p> <p>Immunoglobulin concentration was determined by extinction coefficient: absorbance at 280 nm of 1.4 equals 1.0 mg of IgG.</p>
APPLICATIONS	<p>Centrifuge tube to remove product from lid. Optimal working dilutions should be determined experimentally by the investigator. Prepare working dilution immediately before use.</p> <p>Western Blot 1:5,000 - 1:15,000</p> <p>Immunoprecipitation 2 - 5 µg/mg lysate</p> <p>Immunohistochemistry 1:100 - 1:500. Epitope retrieval with Tris-EDTA pH 9.0 is recommended for FFPE tissue sections.</p>
APPLICATION NOTES	<p>Western blot of immunoprecipitates performed using Normal Pig Serum (Cat. No. S100-020), Goat anti-Rabbit Light Chain HRP Conjugate (Cat. No. A120-113P) and 4-20% SDS-PAGE (link to IP-western blot protocol in Additional Info section below).</p> <p>Western blot of lysates performed using standard western blot reagents and 4-20% SDS-PAGE.</p>
IHC HUMAN CONTROLS	Breast Carcinoma, Colon Carcinoma, Non-Small Cell Lung Cancer, Ovarian Carcinoma, Prostate Carcinoma, Stomach Adenocarcinoma, Testicular Seminoma
IHC MOUSE CONTROLS	Colon Carcinoma CT26, Renal Cell Carcinoma, Teratoma
ADDITIONAL INFO	<p>https://www.bethyl.com/product/A300-460A</p> <p>Use the link above to view SDS, a current list of citations, and other product specific information.</p> <p>IP-western blot protocol: https://www.bethyl.com/content/protocol_IP_WB</p>

This document certifies that this product has met all of the quality control standards defined by Bethyl Laboratories, Inc.
Eric McIntush, PhD | Chief Scientific Officer Date: June 21, 2019



Detection of human DDX6 by western blot and immunoprecipitation. *Samples:* Whole cell lysate (15 and 50 μ g for WB in A; 1 mg for IP, 1/4 of IP loaded in B) from HeLa cells. *Antibodies:* Affinity purified rabbit anti-DDX6 antibody BL2139 (Cat. No. A300-460A) used at 0.04 μ g/ml for WB (A and B) and at 3 μ g/mg lysate for IP. DDX6 was also immunoprecipitated using rabbit anti-DDX6 antibody BL2142 (Cat. No. A300-461A), but not with BL2141, which is to another epitope from DDX6. Normal rabbit IgG was used as a negative control. *Detection:* Chemiluminescence with an exposure time of 1 second (A & B).



Detection of human and mouse DDX6 by immunohistochemistry. *Sample:* FFPE section of human colon carcinoma (left) and mouse renal cell carcinoma (right). *Antibody:* Affinity purified rabbit anti-DDX6 (Cat. No. A300-460A) used at a dilution of 1:200 (1 μ g/ml). *Detection:* DAB.