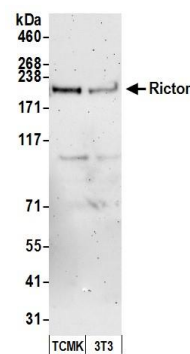
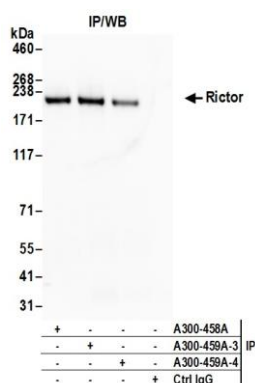


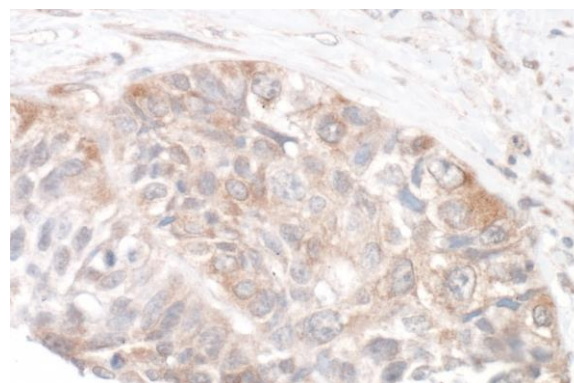
**Detection of human Rictor by western blot.** *Samples:* Whole cell lysate (50  $\mu$ g) from HeLa, HEK293T, and Jurkat cells prepared using NETN lysis buffer. *Antibody:* Affinity purified rabbit anti-Rictor antibody A300-459A (lot A300-459A-4) used for WB at 0.1  $\mu$ g/ml. *Detection:* Chemiluminescence with an exposure time of 30 seconds.



**Detection of mouse Rictor by western blot.** *Samples:* Whole cell lysate (50  $\mu$ g) from TCMK-1 and NIH 3T3 cells prepared using NETN lysis buffer. *Antibody:* Affinity purified rabbit anti-Rictor antibody A300-459A (lot A300-459A-4) used for WB at 0.1  $\mu$ g/ml. *Detection:* Chemiluminescence with an exposure time of 3 minutes.



**Detection of human Rictor by western blot of immunoprecipitates.** *Samples:* Whole cell lysate (1.0 mg per IP reaction; 20% of IP loaded) from HeLa cells prepared using NETN lysis buffer. *Antibodies:* Affinity purified rabbit anti-Rictor antibody A300-459A (lot A300-459A-4) used for IP at 3  $\mu$ g per reaction. Rictor was also immunoprecipitated by a previous lot of this antibody (lot A300-459A-3) and rabbit anti-Rictor antibody A300-458A. For blotting immunoprecipitated Rictor, A300-459A was used at 1  $\mu$ g/ml. *Detection:* Chemiluminescence with an exposure time of 10 seconds.



**Detection of human Rictor by immunohistochemistry.** *Sample:* FFPE section of human lung carcinoma. *Antibody:* Affinity purified rabbit anti-Rictor (Cat. No. A300-459A Lot 4) used at a dilution of 1:1,000 (1  $\mu$ g/ml). *Detection:* DAB