

ROCK1 Antibody

Rabbit Polyclonal

Antigen Affinity Purified

Protein ID Q13464

Catalog No. A300-455A

GeneID 6093

Lot No. A300-455A-1



APPLICATIONS	IP
SPECIES REACTIVITY	Human
PRESUMED REACTIVITY	Based on 100% sequence identity, this antibody is predicted to react with Chimpanzee
AMOUNT	100 µl
CONCENTRATION	1000 µg/ml
STORAGE/SHELF LIFE	2 - 8° C / 1 year from date of receipt
PHYSICAL STATE	Liquid
BUFFER	Tris-citrate/phosphate buffer, pH 7 to 8 containing 0.09% Sodium Azide
ISOTYPE	IgG
ORIGIN	USA
PRODUCTION PROCEDURES	Antibody was affinity purified using an epitope specific to ROCK1 immobilized on solid support.

The epitope recognized by A300-455A maps to a region between residues 400 and 450 of human Rho-associated, coiled-coil containing protein kinase 1 using the numbering given in Swiss-Prot entry Q13464 (GeneID 6093).

Immunoglobulin concentration was determined by extinction coefficient: absorbance at 280 nm of 1.4 equals 1.0 mg of IgG.

APPLICATIONS Centrifuge tube to remove product from lid. Optimal working dilutions should be determined experimentally by the investigator. Prepare working dilution immediately before use.

Western Blot Not recommended. Use rabbit anti-ROCK1 antibody A300-456A or A300-457A.

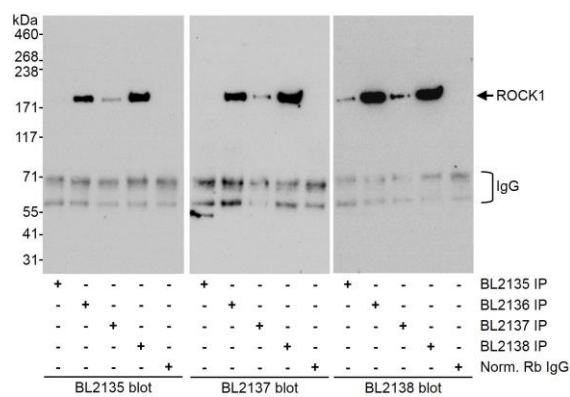
Immunoprecipitation 2 - 5 µg/mg lysate

APPLICATION NOTES Western blot of immunoprecipitates performed using Normal Pig Serum (Cat. No. S100-020), Goat anti-Rabbit Light Chain HRP Conjugate (Cat. No. A120-113P) and 4-8% SDS-PAGE (link to IP-western blot protocol in Additional Info section below).

ADDITIONAL INFO <https://www.bethyl.com/product/A300-455A>

Use the link above to view SDS, a current list of citations, and other product specific information. IP-western blot protocol: https://www.bethyl.com/content/protocol_IP_WB

This document certifies that this product has met all of the quality control standards defined by Bethyl Laboratories, Inc.
Eric McIntush, PhD | Chief Scientific Officer Date: June 21, 2019



Detection of human ROCK1 by western blot of immunoprecipitates. *Samples:* Whole cell lysate (1 mg/IP; 1/4 of IP loaded/lane) from HeLa cells. *Antibodies:* Affinity purified rabbit anti-ROCK1 antibodies BL2135, BL2136 (Cat. No. A300-455A), BL2137 (Cat. No. A300-456A) and BL2138 (A300-457A) used at 3 μ g/mg lysate for IP. Normal rabbit IgG was used as a control for immunoprecipitation. ROCK1 was blotted with BL2135, BL2137, or BL2138 (each at 1 μ g/ml). *Detection:* Chemiluminescence with exposure times of 10 to 30 seconds.