

FOXO3a Antibody

Rabbit Polyclonal

Antigen Affinity Purified

Protein ID O43524

Catalog No. A300-454A

GeneID 2309

Lot No. A300-454A-2

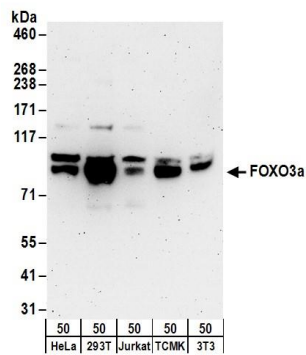


APPLICATIONS	WB, IP, IHC
SPECIES REACTIVITY	Human, Mouse
AMOUNT	100 µl
CONCENTRATION	1000 µg/ml
STORAGE/SHELF LIFE	2 – 8° C / 1 year from date of receipt
PHYSICAL STATE	Liquid
BUFFER	Tris-citrate/phosphate buffer, pH 7 to 8 containing 0.09% Sodium Azide
ISOTYPE	IgG
ORIGIN	USA
PRODUCTION PROCEDURES	<p>Antibody was affinity purified using an epitope specific to FOXO3a immobilized on solid support.</p> <p>The epitope recognized by A300-454A maps to a region between residue 625 and the C-terminus (residue 673) of human Forkhead Box O3a using the numbering given in Swiss-Prot entry O43524 (GeneID 2309).</p> <p>Immunoglobulin concentration was determined by extinction coefficient: absorbance at 280 nm of 1.4 equals 1.0 mg of IgG.</p>
APPLICATIONS	<p>Centrifuge tube to remove product from lid. Optimal working dilutions should be determined experimentally by the investigator. Prepare working dilution immediately before use.</p> <p>Western Blot 1:2,000 – 1:10,000</p> <p>Immunoprecipitation 2 – 5 µg/mg lysate</p> <p>Immunohistochemistry 1:500 – 1:2,000. Epitope retrieval with Tris-EDTA pH 9.0 is recommended for FFPE tissue sections.</p>
APPLICATION NOTES	<p>Western blot of immunoprecipitates performed using Normal Pig Serum (Cat. No. S100-020), Goat anti-Rabbit Light Chain HRP Conjugate (Cat. No. A120-113P) and 4-8% SDS-PAGE (link to IP-western blot protocol in Additional Info section below).</p> <p>Western blot of lysates performed using standard western blot reagents and 4-8% SDS-PAGE.</p>
IHC HUMAN CONTROLS	Breast Carcinoma, Colon Carcinoma, Prostate Carcinoma
IHC MOUSE CONTROLS	Colon Carcinoma CT26, Renal Cell Carcinoma
ADDITIONAL INFO	<p>https://www.bethyl.com/product/A300-454A</p> <p>Use the link above to view SDS, a current list of citations, and other product specific information.</p> <p>IP-western blot protocol: https://www.bethyl.com/content/protocol_IP_WB</p>

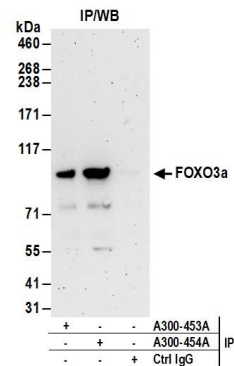
This document certifies that this product has met all of the quality control standards defined by Bethyl Laboratories, Inc.

Eric McIntush, PhD | Chief Scientific Officer

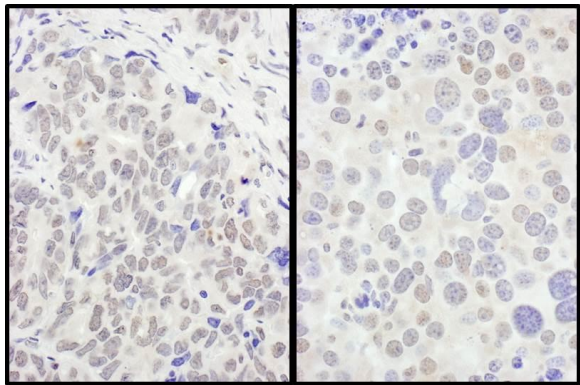
Date: June 21, 2019



Detection of human and mouse FOXO3a by western blot.
Samples: Whole cell lysate (50 µg) from HeLa, HEK293T, Jurkat, mouse TCMK-1, and mouse NIH 3T3 cells.
Antibodies: Affinity purified rabbit anti-FOXO3a antibody A300-454A (lot A300-454A-2) used for WB at 0.1 µg/ml.
Detection: Chemiluminescence with an exposure time of 3 minutes.



Detection of human FOXO3a by western blot of immunoprecipitates. *Samples:* Whole cell lysate (1 mg for IP; 20% of IP loaded) from MCF-7 cells. *Antibodies:* Affinity purified rabbit anti-FOXO3a antibody A300-454A (lot A300-454A-2) used for IP at 6 µg/mg lysate. FOXO3a was also immunoprecipitated by rabbit anti-FOXO3a antibody A300-453A. For blotting immunoprecipitated FOXO3a, A300-454A was used at 1 µg/ml. *Detection:* Chemiluminescence with an exposure time of 3 minutes.



Detection of human and mouse FOXO3a by immunohistochemistry. *Sample:* FFPE section of human ovarian carcinoma (left) and mouse renal cell carcinoma (right). *Antibody:* Affinity purified rabbit anti-FOXO3a (Cat. No. A300-454A Lot2) used at a dilution of 1:1,000 (1 µg/ml). *Detection:* DAB