

XRN1 Antibody

Rabbit Polyclonal

Antigen Affinity Purified

Protein ID Q6MZS8

Catalog No. A300-443A

GeneID 54464

Lot No. A300-443A-5

APPLICATIONS WB, IP

SPECIES REACTIVITY Human, Mouse

AMOUNT 100 µl

CONCENTRATION 1000 µg/ml

STORAGE/SHELF LIFE 2 – 8° C / 1 year from date of receipt

PHYSICAL STATE Liquid

BUFFER Tris-citrate/phosphate buffer, pH 7 to 8 containing 0.09% Sodium Azide

ISOTYPE IgG

ORIGIN USA

PRODUCTION PROCEDURES Antibody was affinity purified using an epitope specific to XRN1 immobilized on solid support.

The epitope recognized by A300-443A maps to a region between residue 1650 and the C-terminus (residue 1706) of human 5'-3' Exoribonuclease 1 using the numbering given in TrEMBL entry Q6MZS8 (GeneID 54464).

Immunoglobulin concentration was determined by extinction coefficient: absorbance at 280 nm of 1.4 equals 1.0 mg of IgG.

APPLICATIONS Centrifuge tube to remove product from lid. Optimal working dilutions should be determined experimentally by the investigator. Prepare working dilution immediately before use.

Western Blot 1:2,000 – 1:10,000

Immunoprecipitation 2 – 10 µg/mg lysate

ADDITIONAL INFO <https://www.bethyl.com/product/A300-443A>

Use the link above to view SDS, a current list of citations, and other product specific information.

IP-western blot protocol: https://www.bethyl.com/content/protocol_IP_WB

This document certifies that this product has met all of the quality control standards defined by Bethyl Laboratories, Inc.

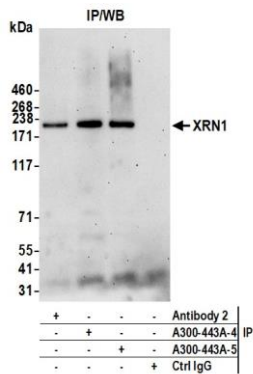
Michael Spencer, PhD

Date: September 1, 2021



Detection of human XRN1 by western blot. *Samples:* Whole cell lysate (10 µg) from HeLa, HEK293T, Jurkat, K-562, and MCF-7 cells prepared using NETN lysis buffer. *Antibody:* Affinity purified rabbit anti-XRN1 antibody (A300-443A lot 5) used for WB at 0.1 µg/ml. *Detection:* Chemiluminescence with an exposure time of 30 seconds.

Detection of mouse XRN1 by western blot. *Samples:* Whole cell lysate (10 µg) from CH27 and BW5147.3 cells prepared using NETN lysis buffer. *Antibody:* Affinity purified rabbit anti-XRN1 antibody (A300-443A lot 5) used for WB at 0.1 µg/ml. *Detection:* Chemiluminescence with an exposure time of 75 seconds.



Detection of human XRN1 by western blot of immunoprecipitates. *Samples:* Whole cell lysate (1.0 mg per IP reaction; 20% of IP loaded) from HeLa cells prepared using NETN lysis buffer. *Antibodies:* Affinity purified rabbit anti-XRN1 antibody (A300-443A lot 5) used for IP at 6 µg per reaction. XRN1 was also immunoprecipitated by a previous lot of this antibody (A300-443A lot 4) and a second antibody against a different epitope of XRN1 (Antibody 2). For blotting immunoprecipitated XRN1, A300-443A was used at 0.1 µg/ml. *Detection:* Chemiluminescence with an exposure time of 75 seconds.