

PNUTS Antibody

Rabbit Polyclonal

Antigen Affinity Purified Protein ID Q96QC0
Catalog No. A300-440A GeneID 5514
Lot No. A300-440A-1



APPLICATIONS	WB, IP
SPECIES REACTIVITY	Human
PRESUMED REACTIVITY	Based on 100% sequence identity, this antibody is predicted to react with Mouse, Rat, Pig, Monkey and Chimpanzee
AMOUNT	100 µl
CONCENTRATION	1000 µg/ml
STORAGE/SHELF LIFE	2 – 8° C / 1 year from date of receipt
PHYSICAL STATE	Liquid
BUFFER	Tris-citrate/phosphate buffer, pH 7 to 8 containing 0.09% Sodium Azide
ISOTYPE	IgG
ORIGIN	USA
PRODUCTION PROCEDURES	Antibody was affinity purified using an epitope specific to PNUTS immobilized on solid support.

The epitope recognized by A300-439A maps to a region between residue 900 and the C-terminus (residue 940) of human Phosphatase Nuclear Targeting Subunit (a.k.a. Protein Phosphatase 1, regulatory subunit 10) using the numbering given in TrEMBL entry Q96QC0 (GeneID 5514).

Immunoglobulin concentration was determined by extinction coefficient: absorbance at 280 nm of 1.4 equals 1.0 mg of IgG.

APPLICATIONS Centrifuge tube to remove product from lid. Optimal working dilutions should be determined experimentally by the investigator. Prepare working dilution immediately before use.

Western Blot 1:1,000 – 1:5,000

Immunoprecipitation 1 – 10 µg/mg lysate

APPLICATION NOTES Western blot of immunoprecipitates performed using Normal Pig Serum (Cat. No. S100-020), Goat anti-Rabbit Light Chain HRP Conjugate (Cat. No. A120-113P) and 4-8% SDS-PAGE (link to IP-western blot protocol in Additional Info section below).

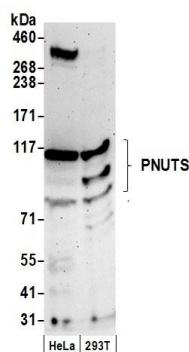
Western blot of lysates performed using standard western blot reagents and 4-8% SDS-PAGE.

ADDITIONAL INFO <https://www.bethyl.com/product/A300-440A>

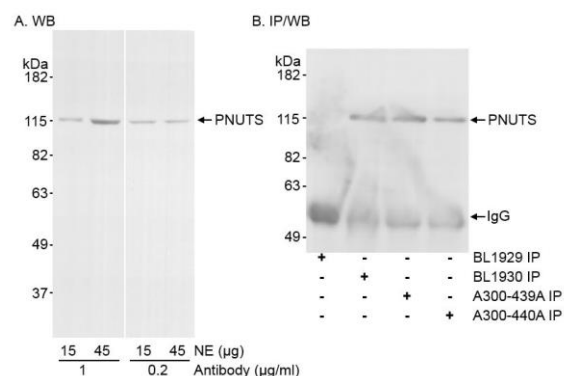
Use the link above to view SDS, a current list of citations, and other product specific information.

IP-western blot protocol: https://www.bethyl.com/content/protocol_IP_WB

This document certifies that this product has met all of the quality control standards defined by Bethyl Laboratories, Inc.
Eric McIntush, PhD | Chief Scientific Officer Date: June 21, 2019



Detection of human PNUTS by western blot. *Samples:* Whole cell lysate (50 µg) from HeLa and HEK293T cells prepared using NETN lysis buffer. *Antibody:* Affinity purified rabbit anti-PNUTS antibody A300-440A (lot A300-440A-1) used for WB at 0.2 µg/ml. *Detection:* Chemiluminescence with an exposure time of 3 minutes.



Detection of human PNUTS by western blot and immunoprecipitation. *Samples:* Nuclear extract (NE; 15 and 45 µg for WB; 100 µg for IP) from HeLa cells. *Antibodies:* Affinity purified rabbit anti-PNUTS antibody A300-440A (lot A300-440A-1) used at 1 and 0.2 µg/ml for WB (A) and at 1 µg/100 µg NE for IP (B). immunoprecipitation of PNUTS was also performed with rabbit anti-PNUTS antibodies BL1929, BL1930 and A300-439A. immunoprecipitatesd PNUTS was blotted using BL1932 at 0.2 µg/ml. *Detection:* Chemiluminescence with exposure times of 10 seconds (A) and 3 seconds (B).