

PNUTS Antibody

Rabbit Polyclonal

Antigen Affinity Purified

Protein ID Q96QC0

Catalog No. A300-439A

GeneID 5514

Lot No. A300-439A-3



APPLICATIONS	WB, IP, IHC
SPECIES REACTIVITY	Human
PRESUMED REACTIVITY	Based on 100% sequence identity, this antibody is predicted to react with Rat, Monkey and Chimpanzee
AMOUNT	100 µl
CONCENTRATION	1000 µg/ml
STORAGE/SHELF LIFE	2 - 8° C / 1 year from date of receipt
PHYSICAL STATE	Liquid
BUFFER	Tris-citrate/phosphate buffer, pH 7 to 8 containing 0.09% Sodium Azide
ISOTYPE	IgG
ORIGIN	USA
PRODUCTION PROCEDURES	Antibody was affinity purified using an epitope specific to PNUTS immobilized on solid support.

The epitope recognized by A300-439A maps to a region between residues 350 and 400 of human Phosphatase Nuclear Targeting Subunit (a.k.a. Protein Phosphatase 1, regulatory subunit 10) using the numbering given in TrEMBL entry Q96QC0 (GeneID 5514).

Immunoglobulin concentration was determined by extinction coefficient: absorbance at 280 nm of 1.4 equals 1.0 mg of IgG.

APPLICATIONS Centrifuge tube to remove product from lid. Optimal working dilutions should be determined experimentally by the investigator. Prepare working dilution immediately before use.

Western Blot 1:1,000 - 1:10,000

Immunoprecipitation 1 - 10 µg/mg lysate

Immunohistochemistry 1:500 - 1:2,000. Epitope retrieval with citrate buffer pH 6.0 is recommended for FFPE tissue sections.

APPLICATION NOTES Western blot of immunoprecipitates performed using Normal Pig Serum (Cat. No. S100-020), Goat anti-Rabbit Light Chain HRP Conjugate (Cat. No. A120-113P) and 4-8% SDS-PAGE (link to IP-western blot protocol in Additional Info section below).

Western blot of lysates performed using standard western blot reagents and 4-8% SDS-PAGE.

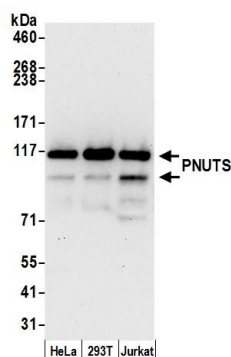
IHC HUMAN CONTROLS Breast Carcinoma, Prostate Carcinoma

ADDITIONAL INFO <https://www.bethyl.com/product/A300-439A>

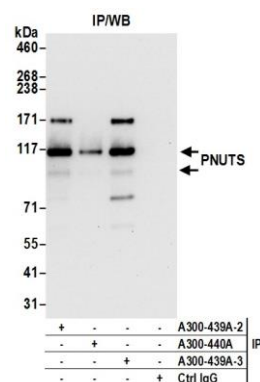
Use the link above to view SDS, a current list of citations, and other product specific information.

IP-western blot protocol: https://www.bethyl.com/content/protocol_IP_WB

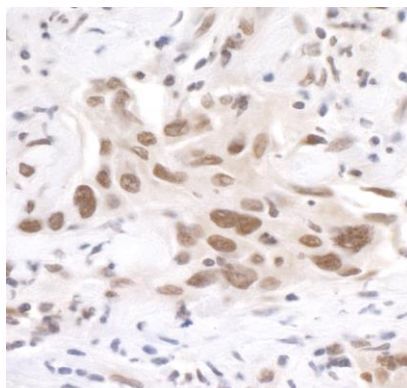
This document certifies that this product has met all of the quality control standards defined by Bethyl Laboratories, Inc.
Eric McIntush, PhD | Chief Scientific Officer Date: June 21, 2019



Detection of human PNUTS by western blot. *Samples:* Whole cell lysate (15 µg) from HeLa, HEK293T, and Jurkat cells prepared using NETN lysis buffer. *Antibody:* Affinity purified rabbit anti-PNUTS antibody A300-439A (lot A300-439A-3) used for WB at 0.1 µg/ml. *Detection:* Chemiluminescence with an exposure time of 30 seconds.



Detection of human PNUTS by western blot of immunoprecipitates. *Samples:* Whole cell lysate (1.0 mg per IP reaction; 20% of IP loaded) from HEK293T cells. *Antibodies:* Affinity purified rabbit anti-PNUTS antibody A300-439A (lot A300-439A-3) used for IP at 3 µg per reaction. PNUTS was also immunoprecipitated by a previous lot of this antibody (lot A300-439A-2) and rabbit anti-PNUTS antibody A300-440A. For blotting immunoprecipitated PNUTS, A300-439A was used at 1 µg/ml. *Detection:* Chemiluminescence with an exposure time of 10 seconds.



Detection of human PNUTS by immunohistochemistry.
Sample: FFPE section of human breast carcinoma.
Antibody: Affinity purified rabbit anti-PNUTS (Cat. No. A300-439A Lot3) used at a dilution of 1:1,000 (1 µg/ml).
Detection: DAB