

TPX2 Antibody

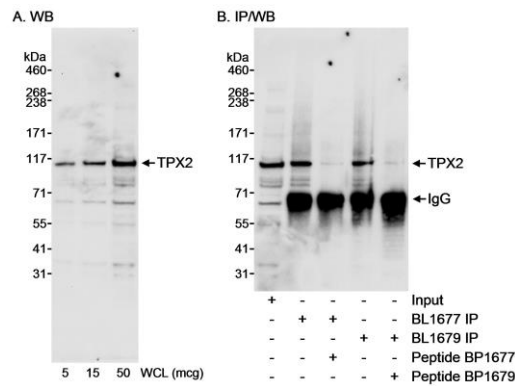
Rabbit Polyclonal

Antigen Affinity Purified	Protein ID	Q9ULW0
Catalog No. A300-430A	GeneID	22974
Lot No. A300-430A-1		



APPLICATIONS	WB, IP				
SPECIES REACTIVITY	Human				
PRESUMED REACTIVITY	Based on 100% sequence identity, this antibody is predicted to react with Guinea pig_10141, Orangutan, Monkey, Gorilla and Chimpanzee				
AMOUNT	100 µl				
CONCENTRATION	1000 µg/ml				
STORAGE/SHELF LIFE	2 - 8° C / 1 year from date of receipt				
PHYSICAL STATE	Liquid				
BUFFER	Tris-citrate/phosphate buffer, pH 7 to 8 containing 0.09% Sodium Azide				
ISOTYPE	IgG				
ORIGIN	USA				
PRODUCTION PROCEDURES	<p>Antibody was affinity purified using an epitope specific to TPX2 immobilized on solid support.</p> <p>The epitope recognized by A300-430A maps to a region between residue 700 and the C-terminus (residue 749) of human TPX2 using the numbering given in Swiss-Prot entry Q9ULW0 (GeneID 22974).</p> <p>Immunoglobulin concentration was determined by extinction coefficient: absorbance at 280 nm of 1.4 equals 1.0 mg of IgG.</p>				
APPLICATIONS	<p>Centrifuge tube to remove product from lid. Optimal working dilutions should be determined experimentally by the investigator. Prepare working dilution immediately before use.</p> <table><tr><td>Western Blot</td><td>1:5,000 - 1:15,000</td></tr><tr><td>Immunoprecipitation</td><td>1 - 4 µg/mg lysate</td></tr></table>	Western Blot	1:5,000 - 1:15,000	Immunoprecipitation	1 - 4 µg/mg lysate
Western Blot	1:5,000 - 1:15,000				
Immunoprecipitation	1 - 4 µg/mg lysate				
APPLICATION NOTES	<p>Western blot of immunoprecipitates performed using Normal Pig Serum (Cat. No. S100-020), Goat anti-Rabbit Light Chain HRP Conjugate (Cat. No. A120-113P) and 4-8% SDS-PAGE (link to IP-western blot protocol in Additional Info section below).</p> <p>Western blot of lysates performed using standard western blot reagents and 4-8% SDS-PAGE.</p>				
ADDITIONAL INFO	<p>https://www.bethyl.com/product/A300-430A</p> <p>Use the link above to view SDS, a current list of citations, and other product specific information.</p> <p>IP-western blot protocol: https://www.bethyl.com/content/protocol_IP_WB</p>				

This document certifies that this product has met all of the quality control standards defined by Bethyl Laboratories, Inc.
Eric McIntush, PhD | Chief Scientific Officer Date: June 21, 2019



Detection of human TPX2 by western blot and immunoprecipitation. *Samples:* Whole cell lysate (WCL; 5, 15, 50 µg for A; 50 µg for Input and 1 mg for IP in B) from HeLa cells. *Antibodies:* Affinity purified rabbit anti-TPX2 antibody BL1679 (Cat. No. A300-430A) used at 0.1 µg/ml for WB (A & B) and at 0.4 µg/mg lysate for IP (B). TPX2 was also immunoprecipitated using rabbit anti-TPX2 antibody BL1677 (Cat. No. A300-429A) at 0.4 µg/mg lysate. *Detection:* Chemiluminescence with an exposure time of 1 minute.