

CRSP3 Antibody

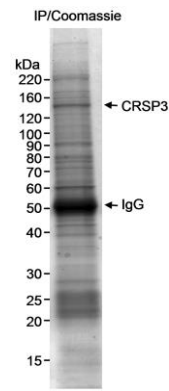
Rabbit Polyclonal

Antigen Affinity Purified	Protein ID	Q9ULK4
Catalog No. A300-423A	GeneID	9439
Lot No. A300-423A-1		



APPLICATIONS	IP
SPECIES REACTIVITY	Human
PRESUMED REACTIVITY	Based on 100% sequence identity, this antibody is predicted to react with Mouse and Rat
AMOUNT	100 µl
CONCENTRATION	1000 µg/ml
STORAGE/SHELF LIFE	2 – 8° C / 1 year from date of receipt
PHYSICAL STATE	Liquid
BUFFER	Tris-citrate/phosphate buffer, pH 7 to 8 containing 0.09% Sodium Azide
ISOTYPE	IgG
ORIGIN	USA
PRODUCTION PROCEDURES	<p>Antibody was affinity purified using an epitope specific to CRSP3 immobilized on solid support.</p> <p>The epitope recognized by A300-423A maps to a region between residues 1 and 50 of human Cofactor Required for Sp1 transcriptional activation, subunit 3 using the numbering given in Swiss-Prot entry Q9ULK4 (GeneID 9439).</p> <p>Immunoglobulin concentration was determined by extinction coefficient: absorbance at 280 nm of 1.4 equals 1.0 mg of IgG.</p>
APPLICATIONS	<p>Centrifuge tube to remove product from lid. Optimal working dilutions should be determined experimentally by the investigator. Prepare working dilution immediately before use.</p> <p>Western Blot Not recommended. Use rabbit anti-CRSP3 antibody A300-425A.</p> <p>Immunoprecipitation 1 – 4 µg/mg lysate</p>
APPLICATION NOTES	Western blot of immunoprecipitates performed using Normal Pig Serum (Cat. No. S100-020), Goat anti-Rabbit Light Chain HRP Conjugate (Cat. No. A120-113P) and 4-8% SDS-PAGE (link to IP-western blot protocol in Additional Info section below).
ADDITIONAL INFO	<p>https://www.bethyl.com/product/A300-423A</p> <p>Use the link above to view SDS, a current list of citations, and other product specific information. IP-western blot protocol: https://www.bethyl.com/content/protocol_IP_WB</p>

This document certifies that this product has met all of the quality control standards defined by Bethyl Laboratories, Inc.
Eric McIntush, PhD | Chief Scientific Officer Date: June 21, 2019



Detection of human CRSP3 by immunoprecipitation.

Samples: Nuclear extract (5 mg) from HeLa cells. *Antibody:* Affinity purified rabbit anti-CRSP3 antibody (Cat. No. A300-423A) used at 4 μ g/5 mg extract. *Detection:* Coomassie stain. The identity of the band that is CRSP3 was verified by mass spectrometry.