

EWS Antibody

Rabbit Polyclonal

Antigen Affinity Purified

Protein ID Q01844

Catalog No. A300-418A

GeneID 2130

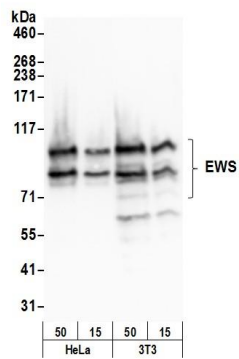
Lot No. A300-418A-2



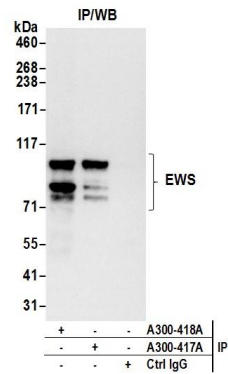
APPLICATIONS	WB, IP
SPECIES REACTIVITY	Human
PRESUMED REACTIVITY	Based on 100% sequence identity, this antibody is predicted to react with Mouse
AMOUNT	100 µl
CONCENTRATION	1000 µg/ml
STORAGE/SHELF LIFE	2 – 8° C / 1 year from date of receipt
PHYSICAL STATE	Liquid
BUFFER	Tris-citrate/phosphate buffer, pH 7 to 8 containing 0.09% Sodium Azide
ISOTYPE	IgG
ORIGIN	USA
PRODUCTION PROCEDURES	<p>Antibody was affinity purified using an epitope specific to EWS immobilized on solid support.</p> <p>The epitope recognized by A300-418A maps to a region between residue 600 and the C-terminus (residue 656) of human Ewing sarcoma breakpoint region 1 using the numbering given in SwissProt entry Q01844 (GeneID 2130).</p> <p>Immunoglobulin concentration was determined by extinction coefficient: absorbance at 280 nm of 1.4 equals 1.0 mg of IgG.</p>
APPLICATIONS	<p>Centrifuge tube to remove product from lid. Optimal working dilutions should be determined experimentally by the investigator. Prepare working dilution immediately before use.</p> <p>Western Blot 1:10,000 – 1:25,000</p> <p>Immunoprecipitation 2 – 10 µg/mg lysate</p>
APPLICATION NOTES	<p>Western blot of immunoprecipitates performed using Normal Pig Serum (Cat. No. S100-020), Goat anti-Rabbit Light Chain HRP Conjugate (Cat. No. A120-113P) and 4-8% SDS-PAGE (link to IP-western blot protocol in Additional Info section below).</p> <p>Western blot of lysates performed using standard western blot reagents and 4-8% SDS-PAGE.</p>
ADDITIONAL INFO	<p>https://www.bethyl.com/product/A300-418A</p> <p>Use the link above to view SDS, a current list of citations, and other product specific information.</p> <p>IP-western blot protocol: https://www.bethyl.com/content/protocol_IP_WB</p>

This document certifies that this product has met all of the quality control standards defined by Bethyl Laboratories, Inc.
Eric McIntush, PhD | Chief Scientific Officer

Date: June 21, 2019



Detection of human and mouse EWS by western blot.
Samples: Whole cell lysate (15 and 50 µg) from HeLa and mouse NIH 3T3 cells prepared using NETN lysis buffer.
Antibody: Affinity purified rabbit anti-EWS antibody A300-418A (lot A300-418A-2) used for WB at 0.04 µg/ml.
Detection: Chemiluminescence with an exposure time of 3 seconds.



Detection of human EWS by western blot of immunoprecipitates. *Samples:* Whole cell lysate (0.5 or 1.0 mg per IP reaction; 20% of IP loaded) from HeLa cells prepared using NETN lysis buffer. *Antibodies:* Affinity purified rabbit anti-EWS antibody A300-418A (lot A300-418A-2) used for IP at 6 µg per reaction. EWS was also immunoprecipitated by rabbit anti-EWS antibody A300-417A. For blotting immunoprecipitated EWS, A300-418A was used at 0.1 µg/ml. *Detection:* Chemiluminescence with an exposure time of 3 seconds.