

STAT6 Antibody

Rabbit Polyclonal

Antigen Affinity Purified

Protein ID NP_003144.3

Catalog No. A300-415A

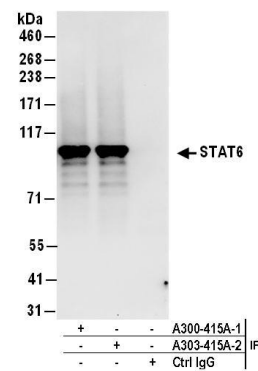
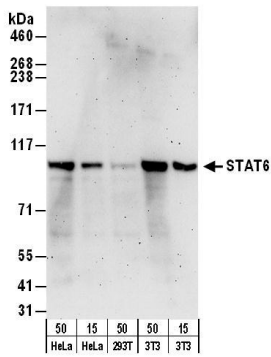
GeneID 6778

Lot No. A300-415A-2



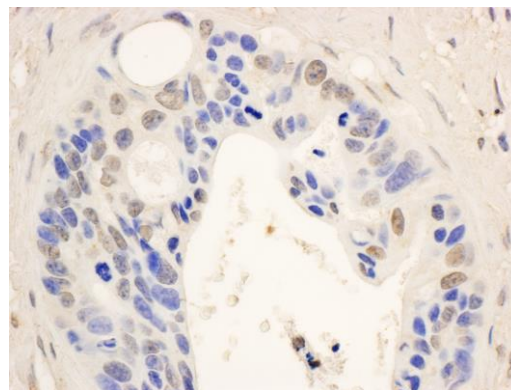
APPLICATIONS	WB, IP, IHC
SPECIES REACTIVITY	Human, Mouse
AMOUNT	100 µl
CONCENTRATION	1000 µg/ml
STORAGE/SHELF LIFE	2 – 8° C / 1 year from date of receipt
PHYSICAL STATE	Liquid
BUFFER	Tris-citrate/phosphate buffer, pH 7 to 8 containing 0.09% Sodium Azide
ISOTYPE	IgG
ORIGIN	USA
PRODUCTION PROCEDURES	<p>Antibody was affinity purified using an epitope specific to STAT6 immobilized on solid support.</p> <p>The epitope recognized by A300-415A maps to a region between residue 600 and 650 of human Signal Transducer and Activator of Transcription 6 using the numbering given in entry NP_003144.3 (GeneID 6778).</p> <p>Immunoglobulin concentration was determined by extinction coefficient: absorbance at 280 nm of 1.4 equals 1.0 mg of IgG.</p>
APPLICATIONS	<p>Centrifuge tube to remove product from lid. Optimal working dilutions should be determined experimentally by the investigator. Prepare working dilution immediately before use.</p> <p>Western Blot 1:1,000 – 1:10,000</p> <p>Immunoprecipitation 2 – 10 µg/mg lysate</p> <p>Immunohistochemistry 1:500 – 1:2,000. Epitope retrieval with citrate buffer pH 6.0 is recommended for FFPE tissue sections.</p>
APPLICATION NOTES	<p>Western blot of immunoprecipitates performed using Normal Pig Serum (Cat. No. S100-020), Goat anti-Rabbit Light Chain HRP Conjugate (Cat. No. A120-113P) and 4-8% SDS-PAGE (link to IP-western blot protocol in Additional Info section below).</p> <p>Western blot of lysates performed using standard western blot reagents and 4-8% SDS-PAGE.</p>
IHC HUMAN CONTROLS	Breast Carcinoma, Ovarian Carcinoma
ADDITIONAL INFO	<p>https://www.bethyl.com/product/A300-415A</p> <p>Use the link above to view SDS, a current list of citations, and other product specific information. IP-western blot protocol: https://www.bethyl.com/content/protocol_IP_WB</p>

This document certifies that this product has met all of the quality control standards defined by Bethyl Laboratories, Inc.
Eric McIntush, PhD | Chief Scientific Officer Date: June 21, 2019



Detection of human and mouse STAT6 by western blot.
Samples: Whole cell lysate from HeLa (15 and 50 µg), HEK293T (50µg), and mouse NIH 3T3 (15 and 50 µg) cells.
Antibodies: Affinity purified rabbit anti-STAT6 antibody A300-415A (lot A300-415A-2) used for WB at 0.1 µg/ml.
Detection: Chemiluminescence with an exposure time of 3 minutes.

Detection of human STAT6 by western blot of immunoprecipitates. *Samples:* Whole cell lysate (1 mg for IP; 20% of IP loaded) from HeLa cells. *Antibodies:* Affinity purified rabbit anti-STAT6 antibody A300-415A (lot A300-415A-2) used for IP at 6 µg/mg lysate. STAT6 was also immunoprecipitated by a previous lot (A300-415A-1) of this antibody. For blotting immunoprecipitated STAT6, A300-415A was used at 1 µg/ml. *Detection:* Chemiluminescence with an exposure time of 10 seconds.



Detection of human STAT6 by immunohistochemistry.
Sample: FFPE section of human ovarian carcinoma.
Antibody: Affinity purified rabbit anti- STAT6 (Cat. No. A300-415A Lot2) used at a dilution of 1:1,000 (1 µg/ml).
Detection: DAB