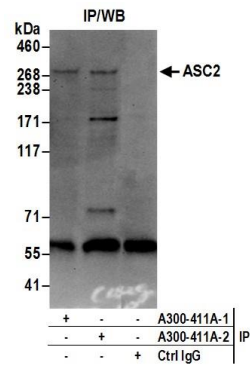


Detection of human ASC2 by western blot. *Samples:* Nuclear extract (50 µg) from HeLa and HEK293T cells. *Antibody:* Affinity purified rabbit anti-ASC2 antibody A300-411A (lot A300-411A-2) used for WB at 0.1 µg/ml. *Detection:* Chemiluminescence with an exposure time of 30 seconds.



Detection of human ASC2 by western blot of immunoprecipitates. *Samples:* Nuclear extract (0.5 or 1.0 mg per IP reaction; 20% of IP loaded) from HeLa cells. *Antibodies:* Affinity purified rabbit anti-ASC2 antibody A300-411A (lot A300-411A-2) used for IP at 6 µg per reaction. ASC2 was also immunoprecipitated by a previous lot of this antibody A300-411A-1. For blotting immunoprecipitated ASC2, A300-411A was used at 1 µg/ml. *Detection:* Chemiluminescence with an exposure time of 30 seconds.