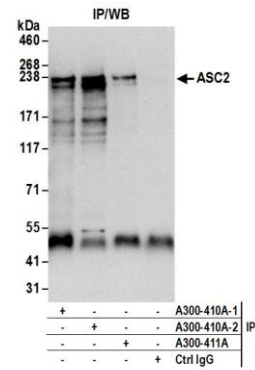
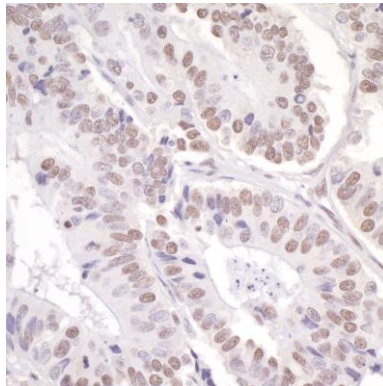


Detection of human ASC2 by western blot. *Samples:* Whole cell lysate (5, 15 and 50 μ g) from HeLa cells prepared using NETN lysis buffer. *Antibody:* Affinity purified rabbit anti-ASC2 antibody A300-410A (lot A300-410A-2) used for WB at 0.1 μ g/ml. *Detection:* Chemiluminescence with an exposure time of 30 seconds.



Detection of human ASC2 by western blot of immunoprecipitates. *Samples:* Whole cell lysate (0.5 or 1.0 mg per IP reaction; 20% of IP loaded) from HeLa cells prepared using NETN lysis buffer. *Antibodies:* Affinity purified rabbit anti-ASC2 antibody A300-410A (lot A300-410A-2) used for IP at 6 μ g per reaction. ASC2 was also immunoprecipitated by a previous lot of this antibody (lot A300-410A-1) and rabbit anti-ASC2 antibody A300-411A. For blotting immunoprecipitated ASC2, A300-410A was used at 1 μ g/ml. *Detection:* Chemiluminescence with an exposure time of 30 seconds.



Detection of human ASC2 by immunohistochemistry. *Sample:* FFPE section of human colon carcinoma. *Antibody:* Affinity purified rabbit anti-ASC2 (Cat. No. A300-410A Lot2) used at a dilution of 1:1,000 (1 μ g/ml). *Detection:* DAB