

# TBLR1 Antibody

Rabbit Polyclonal

Antigen Affinity Purified

Protein ID Q9BZK7

Catalog No. A300-408A

GeneID 79718

Lot No. A300-408A-2



<b>APPLICATIONS</b>	WB, IP, IHC
<b>SPECIES REACTIVITY</b>	Human, Mouse
<b>AMOUNT</b>	100 µl
<b>CONCENTRATION</b>	1000 µg/ml
<b>STORAGE/SHELF LIFE</b>	2 - 8° C / 1 year from date of receipt
<b>PHYSICAL STATE</b>	Liquid
<b>BUFFER</b>	Tris-citrate/phosphate buffer, pH 7 to 8 containing 0.09% Sodium Azide
<b>ISOTYPE</b>	IgG
<b>ORIGIN</b>	USA
<b>PRODUCTION PROCEDURES</b>	Antibody was affinity purified using an epitope specific to TBLR1 immobilized on solid support.

The epitope recognized by A300-408A maps to a region between residues 100 and 150 of human TBL1-related Protein 1 using the numbering given in SwissProt entry Q9BZK7 (GeneID 79718).

Immunoglobulin concentration was determined by extinction coefficient: absorbance at 280 nm of 1.4 equals 1.0 mg of IgG.

**APPLICATIONS** Centrifuge tube to remove product from lid. Optimal working dilutions should be determined experimentally by the investigator. Prepare working dilution immediately before use.

Western Blot 1:2,000 - 1:10,000

Immunoprecipitation 2 - 10 µg/mg lysate

Immunohistochemistry 1:1,000 - 1:5,000. Epitope retrieval with citrate buffer pH 6.0 is recommended for FFPE tissue sections.

**APPLICATION NOTES** Western blot of immunoprecipitates performed using Normal Pig Serum (Cat. No. S100-020), Goat anti-Rabbit Light Chain HRP Conjugate (Cat. No. A120-113P) and 4-20% SDS-PAGE (link to IP-western blot protocol in Additional Info section below).

**IHC HUMAN CONTROLS** Western blot of lysates performed using standard western blot reagents and 4-20% SDS-PAGE. Breast Carcinoma, Colon Carcinoma, Non-Small Cell Lung Cancer, Prostate Carcinoma, Stomach Adenocarcinoma

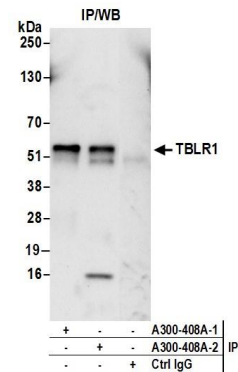
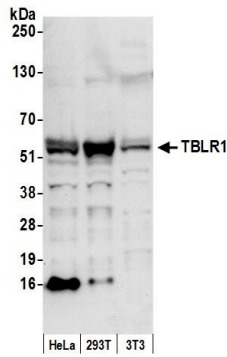
**ADDITIONAL INFO** <https://www.bethyl.com/product/A300-408A>

Use the link above to view SDS, a current list of citations, and other product specific information.

IP-western blot protocol: [https://www.bethyl.com/content/protocol\\_IP\\_WB](https://www.bethyl.com/content/protocol_IP_WB)

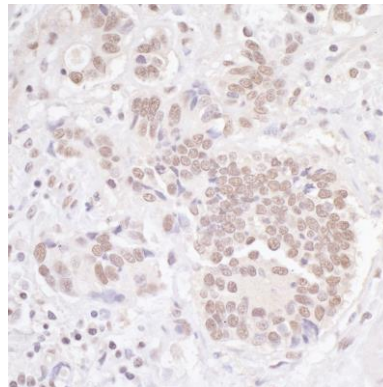
This document certifies that this product has met all of the quality control standards defined by Bethyl Laboratories, Inc.  
Eric McIntush, PhD | Chief Scientific Officer

Date: June 21, 2019



**Detection of human and mouse TBLR1 by western blot.**  
*Samples:* Whole cell lysate (50 µg) from HeLa, HEK293T, and mouse NIH 3T3 cells prepared using NETN lysis buffer.  
*Antibody:* Affinity purified rabbit anti-TBLR1 antibody A300-408A (lot A300-408A-2) used for WB at 0.1 µg/ml.  
*Detection:* Chemiluminescence with an exposure time of 10 seconds.

**Detection of human TBLR1 by western blot of immunoprecipitates.** *Samples:* Whole cell lysate (0.5 or 1.0 mg per IP reaction; 20% of IP loaded) from HeLa cells prepared using NETN lysis buffer. *Antibodies:* Affinity purified rabbit anti-TBLR1 antibody A300-408A (lot A300-408A-2) used for IP at 6 µg per reaction. TBLR1 was also immunoprecipitated by a previous lot of this antibody (lot A300-408A-1). For blotting immunoprecipitated TBLR1, A300-408A was used at 1 µg/ml. *Detection:* Chemiluminescence with an exposure time of 10 seconds.



**Detection of human TBLR1 by immunohistochemistry.**  
*Sample:* FFPE section of human colon carcinoma. *Antibody:* Affinity purified rabbit anti-TBLR1 (Cat. No. A300-408A Lot2) used at a dilution of 1:1,000 (1 µg/ml). *Detection:* DAB