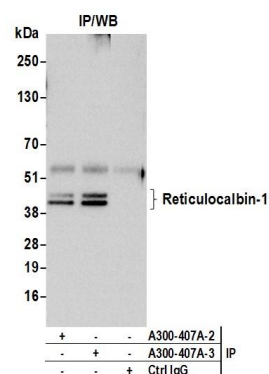
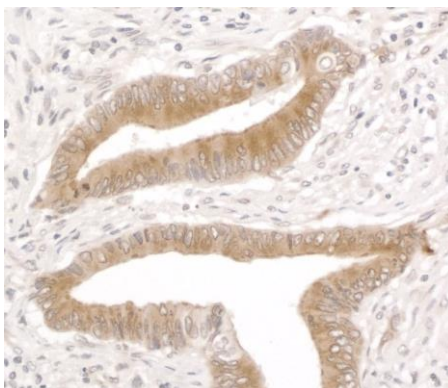


**Detection of human and mouse Reticulocalbin-1 by western blot.** *Samples:* Whole cell lysate (50 µg) from HeLa, HEK293T, and mouse NIH 3T3 cells prepared using NETN lysis buffer. *Antibody:* Affinity purified rabbit anti-Reticulocalbin-1 antibody A300-407A (lot A300-407A-3) used for WB at 0.4 µg/ml. *Detection:* Chemiluminescence with an exposure time of 30 seconds.



**Detection of human Reticulocalbin-1 by western blot of immunoprecipitates.** *Samples:* Whole cell lysate (0.5 or 1.0 mg per IP reaction; 20% of IP loaded) from HeLa cells prepared using NETN lysis buffer. *Antibodies:* Affinity purified rabbit anti-Reticulocalbin-1 antibody A300-407A (lot A300-407A-3) used for IP at 6 µg per reaction. Reticulocalbin-1 was also immunoprecipitated by a previous lot of this antibody (lot A300-407A-2). For blotting immunoprecipitated Reticulocalbin-1, A300-407A was used at 1 µg/ml. *Detection:* Chemiluminescence with an exposure time of 30 seconds.



**Detection of human RCN1 by immunohistochemistry.**

*Sample:* FFPE section of human colon carcinoma. *Antibody:* Affinity purified rabbit anti-RCN1 (Cat. No. A300-407A lot 3) used at a dilution of 1:5,000 (0.2 µg/ml). *Detection:* DAB