

DHX15 Antibody

Rabbit Polyclonal

Antigen Affinity Purified

Protein ID O43143

Catalog No. A300-389A

GeneID 1665

Lot No. A300-389A-1



| | |
|------------------------------|---|
| APPLICATIONS | WB, IHC |
| SPECIES REACTIVITY | Human |
| PRESUMED REACTIVITY | Based on 100% sequence identity, this antibody is predicted to react with Mouse and Orangutan |
| AMOUNT | 100 µl |
| CONCENTRATION | 1000 µg/ml |
| STORAGE/SHELF LIFE | 2 - 8° C / 1 year from date of receipt |
| PHYSICAL STATE | Liquid |
| BUFFER | Tris-citrate/phosphate buffer, pH 7 to 8 containing 0.09% Sodium Azide |
| ISOTYPE | IgG |
| ORIGIN | USA |
| PRODUCTION PROCEDURES | Antibody was affinity purified using an epitope specific to DHX15 immobilized on solid support. |

The epitope recognized by A300-389A maps to a region between residues 350 and 400 of human DEAH (Asp-Glu-Ala-His) Box Polypeptide 15 using the numbering given in Swiss-Prot entry O43143 (GeneID 1665).

Immunoglobulin concentration was determined by extinction coefficient: absorbance at 280 nm of 1.4 equals 1.0 mg of IgG.

APPLICATIONS Centrifuge tube to remove product from lid. Optimal working dilutions should be determined experimentally by the investigator. Prepare working dilution immediately before use.

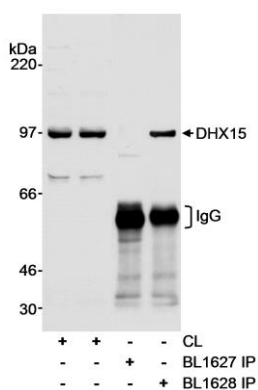
| | |
|----------------------|--|
| Western Blot | 1:5,000 - 1:15,000 |
| Immunoprecipitation | Not recommended. A300-390A has performed well and is suggested for IP. |
| Immunohistochemistry | 1:500 - 1:2,000. Epitope retrieval with citrate buffer pH 6.0 is recommended for FFPE tissue sections. |

APPLICATION NOTES Western blot of lysates performed using standard western blot reagents and 4-8% SDS-PAGE.

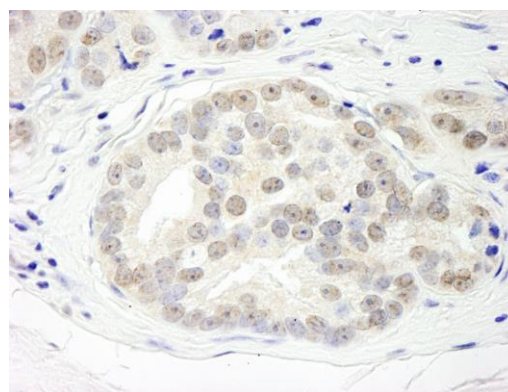
IHC HUMAN CONTROLS Breast Carcinoma, Ovarian Carcinoma, Prostate Carcinoma

ADDITIONAL INFO <https://www.bethyl.com/product/A300-389A>
Use the link above to view SDS, a current list of citations, and other product specific information.

This document certifies that this product has met all of the quality control standards defined by Bethyl Laboratories, Inc.
Eric McIntush, PhD | Chief Scientific Officer Date: June 21, 2019



Detection of human DHX15 by western blot and immunoprecipitation. *Samples:* Whole cell lysate (CL; 60 μ g for WB, 1 mg for IP) from HEK293T cells. *Antibodies:* Affinity purified rabbit anti-DHX15 antibody BL1627 (Cat. No. A300-389A) used at 0.1 μ g/ml for WB and at 1 μ g/mg lysate for IP, which did not precipitate DHX15. Successful IP of DHX15 was accomplished using affinity purified rabbit anti-DHX15 antibody BL1628 (Cat. No. A300-390A) at 1 μ g/mg lysate. *Detection:* Chemiluminescence with an exposure time of 15 seconds.



Detection of human DHX15 by immunohistochemistry. *Sample:* FFPE section of human prostate carcinoma. *Antibody:* Affinity purified rabbit anti-DHX15 (Cat. No. A300-389A) used at a dilution of 1:1,000 (1 μ g/ml). *Detection:* DAB