

BubR1 Antibody

Rabbit Polyclonal

Antigen Affinity Purified

Protein ID Q8WV50

Catalog No. A300-386A

GeneID 701

Lot No. A300-386A-3



APPLICATIONS	WB, IP
SPECIES REACTIVITY	Human, Mouse, Rat
PRESUMED REACTIVITY	Based on 100% sequence identity, this antibody is predicted to react with Panda, Orangutan, Monkey and Gorilla
AMOUNT	100 µl
CONCENTRATION	1000 µg/ml
STORAGE/SHELF LIFE	2 – 8° C / 1 year from date of receipt
PHYSICAL STATE	Liquid
BUFFER	Tris-citrate/phosphate buffer, pH 7 to 8 containing 0.09% Sodium Azide
ISOTYPE	IgG
ORIGIN	USA
PRODUCTION PROCEDURES	Antibody was affinity purified using an epitope specific to BubR1 immobilized on solid support.

The epitope recognized by A300-386A maps to a region between residues 350 and 400 of human budding uninhibited by benzimidazoles 1 homolog beta using the numbering given in TrEMBL entry Q8WV50 (GeneID 701).

Immunoglobulin concentration was determined by extinction coefficient: absorbance at 280 nm of 1.4 equals 1.0 mg of IgG.

APPLICATIONS Centrifuge tube to remove product from lid. Optimal working dilutions should be determined experimentally by the investigator. Prepare working dilution immediately before use.

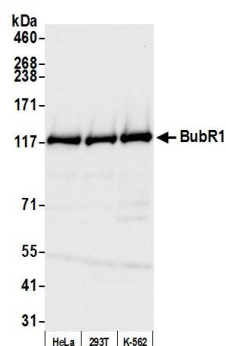
Western Blot 1:2,000 – 1:15,000

Immunoprecipitation 2– 10 µg/mg lysate

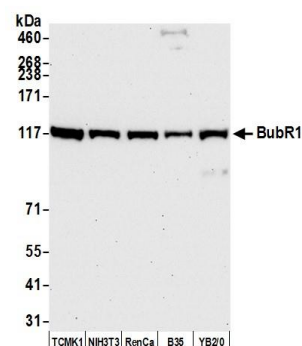
ADDITIONAL INFO <https://www.bethyl.com/product/A300-386A>

Use the link above to view SDS, a current list of citations, and other product specific information.
IP-western blot protocol: https://www.bethyl.com/content/protocol_IP_WB

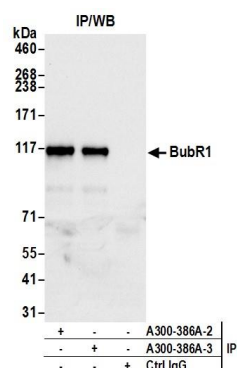
This document certifies that this product has met all of the quality control standards defined by Bethyl Laboratories, Inc.
Eric McIntush, PhD | Chief Scientific Officer Date: April 23, 2020



Detection of human BubR1 by western blot. *Samples:* Whole cell lysate (50 µg) from HeLa, HEK293T, and K-562 cells prepared using NETN lysis buffer. *Antibody:* Affinity purified rabbit anti-BubR1 antibody A300-386A (lot A300-386A-3) used for WB at 0.1 µg/ml. *Detection:* Chemiluminescence with an exposure time of 3 seconds.



Detection of mouse and rat BubR1 by western blot. *Samples:* Whole cell lysate (50 µg) from TCMK-1, NIH 3T3, RenCa, B35, and YB2/O cells prepared using NETN lysis buffer. *Antibody:* Affinity purified rabbit anti-BubR1 antibody A300-386A (lot A300-386A-3) used for WB at 0.1 µg/ml. *Detection:* Chemiluminescence with an exposure time of 30 seconds.



Detection of human BubR1 by western blot of immunoprecipitates. *Samples:* Whole cell lysate (1.0 mg per IP reaction; 20% of IP loaded) from HeLa cells prepared using NETN lysis buffer. *Antibodies:* Affinity purified rabbit anti-BubR1 antibody A300-386A (lot A300-386A-3) used for IP at 6 µg per reaction. BubR1 was also immunoprecipitated by a previous lot of this antibody (lot A300-386A-2). For blotting immunoprecipitated BubR1, A300-386A was used at 0.1 µg/ml. *Detection:* Chemiluminescence with an exposure time of 3 seconds.