

# Bcl11b Antibody

Rabbit Polyclonal

Antigen Affinity Purified	Protein ID	Q9C0K0
Catalog No. A300-383A	GeneID	64919
Lot No. A300-383A-3		

---

<b>APPLICATIONS</b>	WB, IP
<b>SPECIES REACTIVITY</b>	Human
<b>PRESUMED REACTIVITY</b>	Based on 100% sequence identity, this antibody is predicted to react with Mouse
<b>AMOUNT</b>	100 µl
<b>CONCENTRATION</b>	1000 µg/ml
<b>STORAGE/SHELF LIFE</b>	2 – 8°C / 1 year from date of receipt
<b>PHYSICAL STATE</b>	Liquid
<b>BUFFER</b>	Tris-citrate/phosphate buffer, pH 7 to 8 containing 0.09% Sodium Azide
<b>ISOTYPE</b>	IgG
<b>ORIGIN</b>	USA
<b>PRODUCTION PROCEDURES</b>	Antibody was affinity purified using an epitope specific to Bcl11b immobilized on solid support.

The epitope recognized by A300-383A maps to a region between residues 1 and 50 of human B-cell CLL/lymphoma 11B using the numbering given in entry NP\_612808.1 (GeneID 64919).

Immunoglobulin concentration was determined by extinction coefficient: absorbance at 280 nm of 1.4 equals 1.0 mg of IgG.

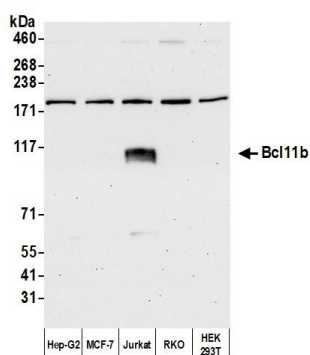
**APPLICATIONS** Centrifuge tube to remove product from lid. Optimal working dilutions should be determined experimentally by the investigator. Prepare working dilution immediately before use.

Western Blot 1:10,000 – 1:25,000

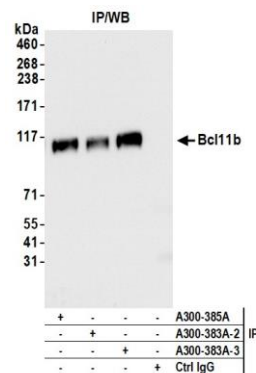
Immunoprecipitation 2 – 10 µg/mg lysate

**ADDITIONAL INFO** <https://www.bethyl.com/product/A300-383A>  
Use the link above to view SDS, a current list of citations, and other product specific information.  
IP-western blot protocol: [https://www.bethyl.com/content/protocol\\_IP\\_WB](https://www.bethyl.com/content/protocol_IP_WB)

This document certifies that this product has met all of the quality control standards defined by Bethyl Laboratories, Inc.  
Michael Spencer, PhD Date: March 18, 2022



**Detection of human Bcl11b by western blot.** *Samples:* Whole cell lysate (5 µg) from Hep-G2, MCF-7, Jurkat, RKO, and HEK293T cells prepared using NETN lysis buffer. *Antibody:* Affinity purified rabbit anti-Bcl11b antibody (A300-383A lot 3) used for WB at 0.04 µg/ml. *Detection:* Chemiluminescence with an exposure time of 3 seconds.



**Detection of human Bcl11b by western blot of immunoprecipitates.** *Samples:* Whole cell lysate (1.0 mg per IP reaction; 10% of IP loaded) from Jurkat cells. *Antibodies:* Affinity purified rabbit anti-Bcl11b antibody (A300-383A lot 3) used for IP at 6 µg per reaction. Bcl11b was also immunoprecipitated by a previous lot of this antibody (A300-383A lot 2) and a second antibody against a different epitope of Bcl11b (A300-385A). For blotting immunoprecipitated Bcl11b, A300-383A was used at 0.04 µg/ml. *Detection:* Chemiluminescence with an exposure time of 3 seconds.