

Bcl11a Antibody

Rabbit Polyclonal

Antigen Affinity Purified

Protein ID Q9H165

Catalog No. A300-382A

GeneID 53335

Lot No. A300-382A-3



APPLICATIONS	WB, IP
SPECIES REACTIVITY	Human, Mouse
AMOUNT	100 µl
CONCENTRATION	1000 µg/ml
STORAGE/SHELF LIFE	2 – 8° C / 1 year from date of receipt
PHYSICAL STATE	Liquid
BUFFER	Tris-citrate/phosphate buffer, pH 7 to 8 containing 0.09% Sodium Azide
ISOTYPE	IgG
ORIGIN	USA
PRODUCTION PROCEDURES	Antibody was affinity purified using an epitope specific to Bcl11a immobilized on solid support.

The epitope recognized by A300-382A maps to a region between residue 775 and the C-terminus (residue 835) of human B-cell CLL/Lymphoma 11A using the numbering given in Swiss-Prot entry Q9H165 (GeneID 53335).

Immunoglobulin concentration was determined by extinction coefficient: absorbance at 280 nm of 1.4 equals 1.0 mg of IgG.

APPLICATIONS Centrifuge tube to remove product from lid. Optimal working dilutions should be determined experimentally by the investigator. Prepare working dilution immediately before use.

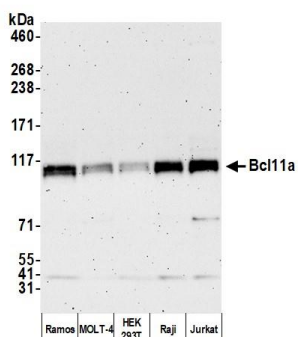
Western Blot 1:10,000 – 1:25,000

Immunoprecipitation 2 – 10 µg/mg lysate

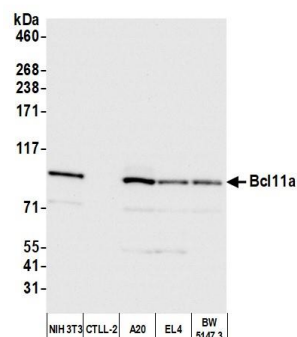
ADDITIONAL INFO <https://www.bethyl.com/product/A300-382A>

Use the link above to view SDS, a current list of citations, and other product specific information. IP-western blot protocol: https://www.bethyl.com/content/protocol_IP_WB

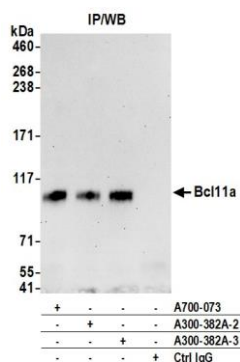
This document certifies that this product has met all of the quality control standards defined by Bethyl Laboratories, Inc.
Brian McWilliams, PhD Date: April 5, 2021



Detection of human Bcl11a by western blot. *Samples:* Whole cell lysate (5 µg) from Ramos, MOLT-4, HEK293T, Raji, and Jurkat cells prepared using NETN lysis buffer. *Antibody:* Affinity purified rabbit anti-Bcl11a antibody (A300-382A lot 3) used for WB at 0.04 µg/ml. *Detection:* Chemiluminescence with an exposure time of 3 minutes.



Detection of mouse Bcl11a by western blot. *Samples:* Whole cell lysate (10 µg) from NIH 3T3, CTLL-2, A20, EL4, and BW5147.3 cells prepared using NETN lysis buffer. *Antibody:* Affinity purified rabbit anti-Bcl11a antibody (A300-382A lot 3) used for WB at 0.04 µg/ml. *Detection:* Chemiluminescence with an exposure time of 3 seconds.



Detection of human Bcl11a by western blot of immunoprecipitates. *Samples:* Whole cell lysate (1.0 mg per IP reaction; 5% of IP loaded) from Ramos cells prepared using NETN lysis buffer. *Antibodies:* Affinity purified rabbit anti-Bcl11a antibody (A300-382A lot 3) used for IP at 6 µg per reaction. Bcl11a was also immunoprecipitated by a previous lot of this antibody (A300-382A lot 2) and another antibody against a different epitope of Bcl11a (A700-073). For blotting immunoprecipitated Bcl11a, A700-073 was used at 1:1000. *Detection:* Chemiluminescence with an exposure time of 30 seconds.