

Bcl11a Antibody

Rabbit Polyclonal

Antigen Affinity Purified

Protein ID Q9H165

Catalog No. A300-380A

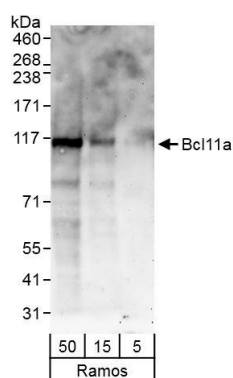
GeneID 53335

Lot No. A300-380A-2

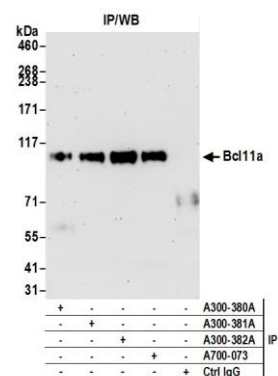


APPLICATIONS	WB, IP
SPECIES REACTIVITY	Human
PRESUMED REACTIVITY	Based on 100% sequence identity, this antibody is predicted to react with Mouse
AMOUNT	100 µl
CONCENTRATION	1000 µg/ml
STORAGE/SHELF LIFE	2 - 8° C / 1 year from date of receipt
PHYSICAL STATE	Liquid
BUFFER	Tris-citrate/phosphate buffer, pH 7 to 8 containing 0.09% Sodium Azide
ISOTYPE	IgG
ORIGIN	USA
PRODUCTION PROCEDURES	<p>Antibody was affinity purified using an epitope specific to Bcl11a immobilized on solid support.</p> <p>The epitope recognized by A300-380A maps to a region between residues 1 and 50 of human B-cell CLL/Lymphoma 11A using the numbering given in Swiss-Prot entry Q9H165 (GeneID 53335).</p> <p>Immunoglobulin concentration was determined by extinction coefficient: absorbance at 280 nm of 1.4 equals 1.0 mg of IgG.</p>
APPLICATIONS	<p>Centrifuge tube to remove product from lid. Optimal working dilutions should be determined experimentally by the investigator. Prepare working dilution immediately before use.</p> <p>Western Blot 1:1,000 - 1:10,000</p> <p>Immunoprecipitation 2 - 10 µg/mg lysate</p>
APPLICATION NOTES	<p>Western blot of immunoprecipitates performed using Normal Pig Serum (Cat. No. S100-020), Goat anti-Rabbit Light Chain HRP Conjugate (Cat. No. A120-113P) and 4-8% SDS-PAGE (link to IP-western blot protocol in Additional Info section below).</p> <p>Western blot of lysates performed using standard western blot reagents and 4-8% SDS-PAGE.</p>
ADDITIONAL INFO	<p>https://www.bethyl.com/product/A300-380A</p> <p>Use the link above to view SDS, a current list of citations, and other product specific information.</p> <p>IP-western blot protocol: https://www.bethyl.com/content/protocol_IP_WB</p>

This document certifies that this product has met all of the quality control standards defined by Bethyl Laboratories, Inc.
Eric McIntush, PhD | Chief Scientific Officer Date: June 21, 2019



Detection of Human Bcl11a by western blot. *Samples:* Whole cell lysate (5, 15 and 50 µg) from Ramos cells. *Antibodies:* Affinity purified rabbit anti-Bcl11a antibody A300-380A (lot A300-380A-2) used at 0.4 µg/ml. *Detection:* Chemiluminescence with exposure times of 3 minutes.



Detection of human Bcl11a by western blot of immunoprecipitates. *Samples:* Whole cell lysate (1.0 mg per IP reaction; 20% of IP loaded) from Ramos cells. *Antibodies:* Affinity purified rabbit anti-Bcl11a antibody A300-380A (lot A300-380A-2) used for IP at 6 µl/mg lysate. Bcl11a was also immunoprecipitated by a rabbit anti-Bcl11a antibodies (A300-381A, A300-382A) and rabbit anti-Bcl11a recombinant monoclonal antibody [BLR073G] (A700-073). For blotting immunoprecipitated Bcl11a, A700-073 was used at 1:1000. Chemiluminescence with an exposure time of 75 seconds.