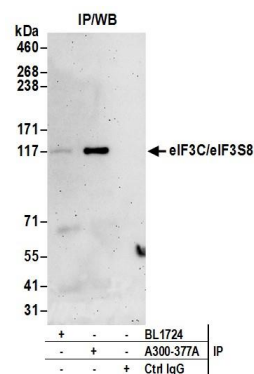


Detection of human eIF3C/eIF3S8 by western blot.

Samples: Whole cell lysate (50 µg) from HeLa, HEK293T, and Jurkat cells prepared using NETN lysis buffer.

Antibodies: Affinity purified rabbit anti-eIF3C/eIF3S8 antibody A300-377A (lot A300-377A-2) used for WB at 0.1 µg/ml. **Detection:** Chemiluminescence with an exposure time of 3 minutes.



Detection of human eIF3C/eIF3S8 by western blot of immunoprecipitates.

Samples: Whole cell lysate (0.5 or 1.0 mg per IP reaction; 20% of IP loaded) from HEK293T cells prepared using NETN lysis buffer. **Antibodies:** Affinity purified rabbit anti-eIF3C/eIF3S8 antibody A300-377A (lot A300-377A-2) used for IP at 6 µg per reaction.

eIF3C/eIF3S8 was inefficiently immunoprecipitated by rabbit anti-eIF3C/eIF3S8 antibody BL1724. For blotting immunoprecipitated eIF3C/eIF3S8, A300-377A was used at 1 µg/ml. **Detection:** Chemiluminescence with an exposure time of 3 minutes.