

Bub1 Antibody

Rabbit Polyclonal

Antigen Affinity Purified

Protein ID O43683

Catalog No. A300-373A

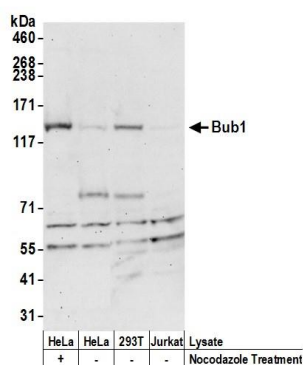
GeneID 699

Lot No. A300-373A-2

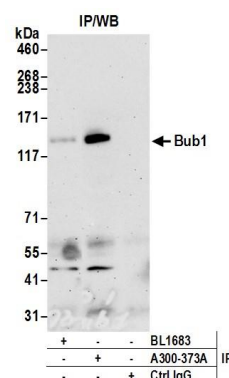


APPLICATIONS	WB, IP, IHC
SPECIES REACTIVITY	Human
AMOUNT	100 µl
CONCENTRATION	1000 µg/ml
STORAGE/SHELF LIFE	2 - 8° C / 1 year from date of receipt
PHYSICAL STATE	Liquid
BUFFER	Tris-citrate/phosphate buffer, pH 7 to 8 containing 0.09% Sodium Azide
ISOTYPE	IgG
ORIGIN	USA
PRODUCTION PROCEDURES	<p>Antibody was affinity purified using an epitope specific to Bub1 immobilized on solid support.</p> <p>The epitope recognized by A300-373A maps to a region between residues 1 and 50 human budding uninhibited by benzimidazoles 1 using the numbering given in Swiss-Prot entry O43683 (GeneID 699).</p> <p>Immunoglobulin concentration was determined by extinction coefficient: absorbance at 280 nm of 1.4 equals 1.0 mg of IgG.</p>
APPLICATIONS	<p>Centrifuge tube to remove product from lid. Optimal working dilutions should be determined experimentally by the investigator. Prepare working dilution immediately before use.</p> <p>Western Blot 1:1,000 - 1:5,000</p> <p>Immunoprecipitation 2 - 10 µg/mg lysate</p> <p>Immunohistochemistry 1:500 - 1:2,000. Epitope retrieval with Tris-EDTA pH 9.0 is recommended for FFPE tissue sections.</p>
APPLICATION NOTES	<p>Western blot of immunoprecipitates performed using Normal Pig Serum (Cat. No. S100-020), Goat anti-Rabbit Light Chain HRP Conjugate (Cat. No. A120-113P) and 4-8% SDS-PAGE (link to IP-western blot protocol in Additional Info section below).</p> <p>Western blot of lysates performed using standard western blot reagents and 4-8% SDS-PAGE.</p>
IHC HUMAN CONTROLS	Colon Carcinoma
ADDITIONAL INFO	<p>https://www.bethyl.com/product/A300-373A</p> <p>Use the link above to view SDS, a current list of citations, and other product specific information.</p> <p>IP-western blot protocol: https://www.bethyl.com/content/protocol_IP_WB</p>

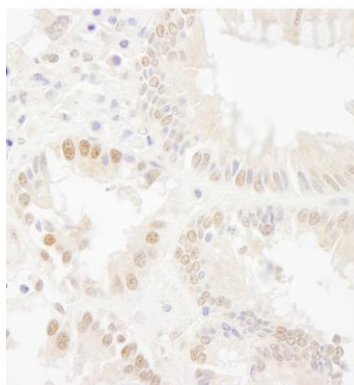
This document certifies that this product has met all of the quality control standards defined by Bethyl Laboratories, Inc.
Eric McIntush, PhD | Chief Scientific Officer Date: June 21, 2019



Detection of human Bub1 by western blot. *Samples:* Whole cell lysate (50 µg) from HeLa treated with nocodazole (+) or mock treated (-), HEK293T, and Jurkat cells prepared using NETN lysis buffer. *Antibody:* Affinity purified rabbit anti-Bub1 antibody A300-373A (lot A300-373A-2) used for WB at 0.4 µg/ml. *Detection:* Chemiluminescence with an exposure time of 30 seconds



Detection of human Bub1 by western blot of immunoprecipitates. *Samples:* Whole cell lysate (1.0 mg per IP reaction; 20% of IP loaded) from HeLa cells treated with nocodazole. *Antibodies:* Affinity purified rabbit anti-Bub1 antibody A300-373A (lot A300-373A-2) used for IP at 6 µg per reaction. Bub1 was also immunoprecipitated by rabbit anti-Bub1 antibody BL1683. For blotting immunoprecipitated Bub1, A300-373A was used at 1 µg/ml. *Detection:* Chemiluminescence with an exposure time of 3 minutes.



Detection of human Bub1 by immunohistochemistry. *Sample:* FFPE section of human colon carcinoma. *Antibody:* Affinity purified rabbit anti-Bub1 (Cat. No. A300-373A) used at a dilution of 1:1,000 (1 µg/ml). *Detection:* DAB