

# Bub3 Antibody

Rabbit Polyclonal

Antigen Affinity Purified Protein ID O43684

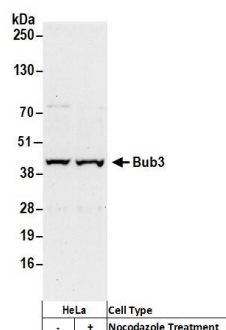
Catalog No. A300-365A GeneID 9184

Lot No. A300-365A-1

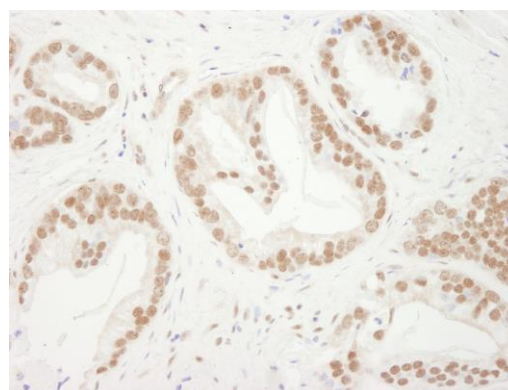


<b>APPLICATIONS</b>	WB, IHC
<b>SPECIES REACTIVITY</b>	Human
<b>PRESUMED REACTIVITY</b>	Based on 100% sequence identity, this antibody is predicted to react with Mouse, Bovine and Orangutan
<b>AMOUNT</b>	100 µl
<b>CONCENTRATION</b>	1000 µg/ml
<b>STORAGE/SHELF LIFE</b>	2 - 8° C / 1 year from date of receipt
<b>PHYSICAL STATE</b>	Liquid
<b>BUFFER</b>	Tris-citrate/phosphate buffer, pH 7 to 8 containing 0.09% Sodium Azide
<b>ISOTYPE</b>	IgG
<b>ORIGIN</b>	USA
<b>PRODUCTION PROCEDURES</b>	<p>Antibody was affinity purified using an epitope specific to Bub3 immobilized on solid support.</p> <p>The epitope recognized by A300-365A maps to a region between residues 275 and 325 of human Bub3 budding uninhibited by benzimidazoles 3 using the numbering given in Swiss-Prot entry O43684 (GeneID 9184).</p> <p>Immunoglobulin concentration was determined by extinction coefficient: absorbance at 280 nm of 1.4 equals 1.0 mg of IgG.</p>
<b>APPLICATIONS</b>	<p>Centrifuge tube to remove product from lid. Optimal working dilutions should be determined experimentally by the investigator. Prepare working dilution immediately before use.</p> <p>Western Blot 1:5,000 - 1:15,000</p> <p>Immunohistochemistry 1:500 - 1:2,000. Epitope retrieval with citrate buffer pH 6.0 is recommended for FFPE tissue sections.</p>
<b>APPLICATION NOTES</b>	Western blot of lysates performed using standard western blot reagents and 4-20% SDS-PAGE.
<b>IHC HUMAN CONTROLS</b>	Breast Carcinoma, Metastatic Lymph Node, Ovarian Carcinoma, Prostate Carcinoma, Small Cell Lung Cancer, Testicular Seminoma
<b>ADDITIONAL INFO</b>	<p><a href="https://www.bethyl.com/product/A300-365A">https://www.bethyl.com/product/A300-365A</a></p> <p>Use the link above to view SDS, a current list of citations, and other product specific information.</p>

This document certifies that this product has met all of the quality control standards defined by Bethyl Laboratories, Inc.  
Eric McIntush, PhD | Chief Scientific Officer Date: June 21, 2019



**Detection of human Bub3 by western blot.** *Samples:* Whole cell lysate (50 µg) from HeLa cells treated with Nocodazole (+) or mock treated (-). *Antibody:* Affinity purified rabbit anti-Bub3 antibody A300-365A (lot A300-365A-1) used for WB at 0.066 µg/ml. *Detection:* Chemiluminescence with an exposure time of 30 seconds.



**Detection of human Bub3 by immunohistochemistry.** *Sample:* FFPE section of human prostate carcinoma. *Antibody:* Affinity purified rabbit anti-Bub3 (Cat. No. A300-365A) used at a dilution of 1:1,000 (1 µg/ml). *Detection:* DAB