

TSC1 Antibody

Rabbit Polyclonal

Antigen Affinity Purified

Protein ID Q92574

Catalog No. A300-316A

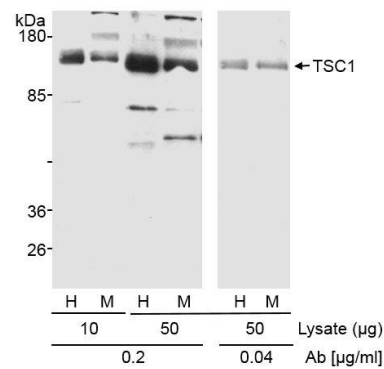
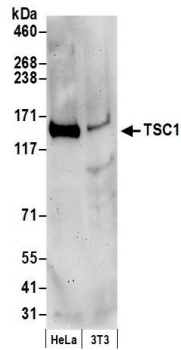
GeneID 7248

Lot No. A300-316A-1



APPLICATIONS	WB, IP
SPECIES REACTIVITY	Human, Mouse
AMOUNT	100 µl
CONCENTRATION	1000 µg/ml
STORAGE/SHELF LIFE	2 – 8° C / 1 year from date of receipt
PHYSICAL STATE	Liquid
BUFFER	Tris-citrate/phosphate buffer, pH 7 to 8 containing 0.09% Sodium Azide
ISOTYPE	IgG
ORIGIN	USA
PRODUCTION PROCEDURES	<p>Antibody was affinity purified using an epitope specific to TSC1 immobilized on solid support.</p> <p>The epitope recognized by A300-316A maps to a region between residue 1100 and the C-terminus (residue 1164) of human tuberous sclerosis 1 using the numbering given in Swiss-Prot entry Q92574 (GeneID 7248).</p> <p>Immunoglobulin concentration was determined by extinction coefficient: absorbance at 280 nm of 1.4 equals 1.0 mg of IgG.</p>
APPLICATIONS	<p>Centrifuge tube to remove product from lid. Optimal working dilutions should be determined experimentally by the investigator. Prepare working dilution immediately before use.</p> <p>Western Blot 1:5,000 – 1:25,000</p> <p>Immunoprecipitation 1 – 5 µg/mg lysate</p>
APPLICATION NOTES	<p>Western blot of immunoprecipitates performed using Normal Pig Serum (Cat. No. S100-020), Goat anti-Rabbit Light Chain HRP Conjugate (Cat. No. A120-113P) and 4-8% SDS-PAGE (link to IP-western blot protocol in Additional Info section below).</p> <p>Western blot of lysates performed using standard western blot reagents and 4-8% SDS-PAGE.</p>
ADDITIONAL INFO	<p>https://www.bethyl.com/product/A300-316A</p> <p>Use the link above to view SDS, a current list of citations, and other product specific information.</p> <p>IP-western blot protocol https://www.bethyl.com/content/protocol_IP_WB</p>

This document certifies that this product has met all of the quality control standards defined by Bethyl Laboratories, Inc.
Eric McIntush, PhD | Chief Scientific Officer Date: October 23, 2019

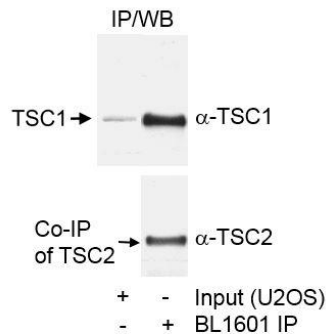


Detection of human and mouse TSC1 by western blot.

Samples: Whole cell lysate (50 µg) from HeLa and mouse NIH 3T3 cells prepared using NETN lysis buffer. **Antibody:** Affinity purified goat anti-TSC1 antibody A300-316A (lot A300-316A-1) used for WB at 0.05 µg/ml. **Detection:** Chemiluminescence with an exposure time of 3 minutes.

Detection of human and mouse TSC1 by western blot.

Samples: Whole cell lysate (10 or 50 µg) from HeLa (H) and MEF (M) cells. **Antibody:** Affinity purified rabbit anti-TSC1 antibody A300-316A (lot A300-316A-1) used for WB at 0.2 or 0.04 µg/ml. **Detection:** Chemiluminescence with an exposure time of 5 minutes.



Detection of human TSC1 by western blot of immunoprecipitates.

Samples: Whole cell lysate (60 µg for input and 1.5 mg for IP) from U2OS cells. **Antibody:** Affinity purified rabbit anti-TSC1 antibody A300-316A (lot A300-316A-1) used for IP at 1 µg/mg lysate. For blotting immunoprecipitated TSC1, A300-316A was used at 0.2 µg/ml. **Detection:** Chemiluminescence with an exposure time of 30 seconds. Note: TSC2 co-immunoprecipitates with TSC1. TSC2 was detected using a TSC2 antibody from another source.