

CDK11 Antibody

Rabbit Polyclonal

Antigen Affinity Purified

Protein ID Q9UQ88

Catalog No. A300-311A

GeneID 728642

Lot No. A300-311A-3



APPLICATIONS	WB, IP, IHC
SPECIES REACTIVITY	Human
PRESUMED REACTIVITY	Based on 100% sequence identity, this antibody is predicted to react with Mouse
AMOUNT	100 µl
CONCENTRATION	1000 µg/ml
STORAGE/SHELF LIFE	2 - 8° C / 1 year from date of receipt
PHYSICAL STATE	Liquid
BUFFER	Tris-citrate/phosphate buffer, pH 7 to 8 containing 0.09% Sodium Azide
ISOTYPE	IgG
ORIGIN	USA
PRODUCTION PROCEDURES	Antibody was affinity purified using an epitope specific to CDK11 immobilized on solid support.

The epitope recognized by A300-311A maps to a region between residues 730 and the C-terminus (residue 780) of human Cell Division Cycle 2-like 2 using the numbering given in SwissProt entry Q9UQ88 (GeneID 728642). The epitope that is recognized by A300-311A is also found in CDC11L1 (Gene ID 984).

Immunoglobulin concentration was determined by extinction coefficient: absorbance at 280 nm of 1.4 equals 1.0 mg of IgG.

APPLICATIONS Centrifuge tube to remove product from lid. Optimal working dilutions should be determined experimentally by the investigator. Prepare working dilution immediately before use.

Western Blot 1:2,000 - 1:10,000

Immunoprecipitation 2 - 5 µg/mg lysate

Immunohistochemistry 1:500 to 1:2,000. Epitope retrieval with citrate buffer pH6.0 is recommended for FFPE tissue sections.

APPLICATION NOTES Western blot of immunoprecipitates performed using Normal Pig Serum (Cat. No. S100-020), Goat anti-Rabbit Light Chain HRP Conjugate (Cat. No. A120-113P) and 4-8% SDS-PAGE (link to IP-western blot protocol in Additional Info section below).

Western blot of lysates performed using standard western blot reagents and 4-8% SDS-PAGE.

IHC HUMAN CONTROLS Linitis Plastica Stomach Cancer, Stomach Adenocarcinoma

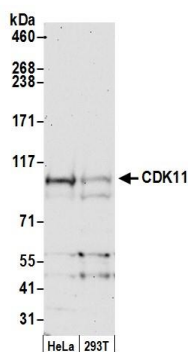
ADDITIONAL INFO <https://www.bethyl.com/product/A300-311A>

Use the link above to view SDS, a current list of citations, and other product specific information.

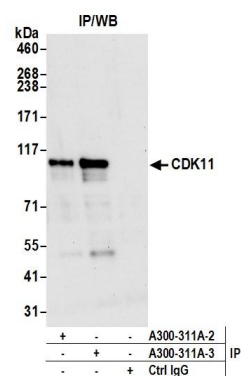
IP-western blot protocol: https://www.bethyl.com/content/protocol_IP_WB

This document certifies that this product has met all of the quality control standards defined by Bethyl Laboratories, Inc.
Eric McIntush, PhD | Chief Scientific Officer

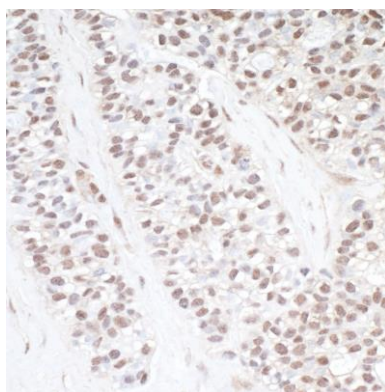
Date: June 21, 2019



Detection of human CDK11 by western blot. *Samples:* Whole cell lysate (15 μ g) from HeLa and HEK293T cells prepared using NETN lysis buffer. *Antibody:* Affinity purified rabbit anti-CDK11 antibody A300-311A (lot A300-311A-3) used for WB at 0.1 μ g/ml. *Detection:* Chemiluminescence with an exposure time of 30 seconds.



Detection of human CDK11 by western blot of immunoprecipitates. *Samples:* Whole cell lysate (1.0 mg per IP reaction; 20% of IP loaded) from HeLa cells prepared using NETN lysis buffer. *Antibodies:* Affinity purified rabbit anti-CDK11 antibody A300-311A (lot A300-311A-3) used for IP at 3 μ g per reaction. CDK11 was also immunoprecipitated by a previous lot of this antibody (lot A300-311A-2). For blotting immunoprecipitated CDK11, A300-311A was used at 1 μ g/ml. *Detection:* Chemiluminescence with an exposure time of 10 seconds.



Detection of human CDK11 by immunohistochemistry. *Sample:* FFPE section of human lung carcinoma. *Antibody:* Affinity purified rabbit anti-CDK11 (Cat. No. A300-311A Lot 3) used at a dilution of 1:1,000 (1 μ g/ml). *Detection:* DAB