

# TAFII68 Antibody

Rabbit Polyclonal

Antigen Affinity Purified Protein ID Q92804

Catalog No. A300-308A GeneID 8148

Lot No. A300-308A-1



<b>APPLICATIONS</b>	WB, IP, IHC
<b>SPECIES REACTIVITY</b>	Human
<b>AMOUNT</b>	100 µl
<b>CONCENTRATION</b>	1000 µg/ml
<b>STORAGE/SHELF LIFE</b>	2 - 8° C / 1 year from date of receipt
<b>PHYSICAL STATE</b>	Liquid
<b>BUFFER</b>	Tris-citrate/phosphate buffer, pH 7 to 8 containing 0.09% Sodium Azide
<b>ISOTYPE</b>	IgG
<b>ORIGIN</b>	USA
<b>PRODUCTION PROCEDURES</b>	Antibody was affinity purified using an epitope specific to TAFII68 immobilized on solid support.

The epitope recognized by A300-308A maps to a region between residues 200 and 250 of human TAFII68 using the numbering given in Swiss-Prot entry Q92804 (GeneID 8148).

Immunoglobulin concentration was determined by extinction coefficient: absorbance at 280 nm of 1.4 equals 1.0 mg of IgG.

**APPLICATIONS** Centrifuge tube to remove product from lid. Optimal working dilutions should be determined experimentally by the investigator. Prepare working dilution immediately before use.

Western Blot 1:5,000 – 1:20,000

Immunoprecipitation 1 – 4 µg/mg lysate

Immunohistochemistry 1:1,000 – 1:5,000. Epitope retrieval with citrate buffer pH 6.0 is recommended for FFPE tissue sections.

**APPLICATION NOTES** Western blot of immunoprecipitates performed using Normal Pig Serum (Cat. No. S100-020), Goat anti-Rabbit Light Chain HRP Conjugate (Cat. No. A120-113P) and 4-8% SDS-PAGE (link to IP-western blot protocol in Additional Info section below).

Western blot of lysates performed using standard western blot reagents and 4-8% SDS-PAGE.

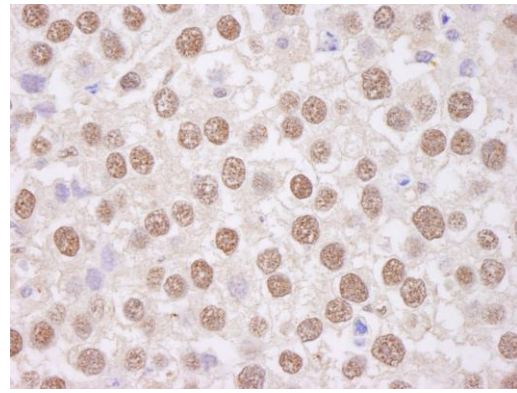
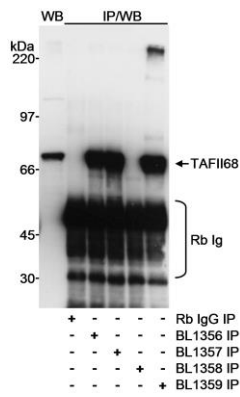
**IHC HUMAN CONTROLS** Ovarian Carcinoma, Testicular Seminoma

**ADDITIONAL INFO** <https://www.bethyl.com/product/A300-308A>

Use the link above to view SDS, a current list of citations, and other product specific information.

IP-western blot protocol: [https://www.bethyl.com/content/protocol\\_IP\\_WB](https://www.bethyl.com/content/protocol_IP_WB)

This document certifies that this product has met all of the quality control standards defined by Bethyl Laboratories, Inc.  
Eric McIntush, PhD | Chief Scientific Officer Date: June 21, 2019



**Detection of human TAFII68 by western blot and immunoprecipitation.** *Samples:* Whole cell lysate (200  $\mu$ g for WB; 10 mg for IP/WB) from HEK293T cells. *Antibodies:* Affinity purified rabbit anti-TAFII68 antibody BL1357 (Cat. No. A300-308A) used at 0.1  $\mu$ g/ml for WB. TAFII68 was immunoprecipitated with rabbit anti-TAFII68 antibodies BL1356 (Cat. No. A300-307A), BL1357, BL1358 and BL1359 (Cat. No. A300-309A) using each at 0.3  $\mu$ g/mg lysate. *Detection:* Chemiluminescence with an exposure time of 5 seconds.

**Detection of human TAFII68 by immunohistochemistry.** *Sample:* FFPE section of human testicular seminoma. *Antibody:* Affinity purified rabbit anti-TAFII68 (Cat. No. A300-308A Lot1) used at a dilution of 1:5,000 (0.2  $\mu$ g/ml). *Detection:* DAB