

ATM Antibody

Rabbit Polyclonal

Antigen Affinity Purified

Protein ID Q13315

Catalog No. A300-299A

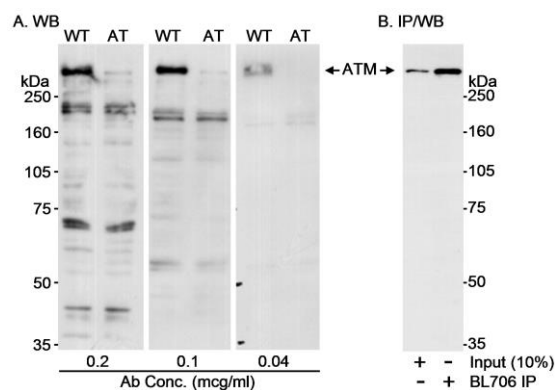
GeneID 472

Lot No. A300-299A-2

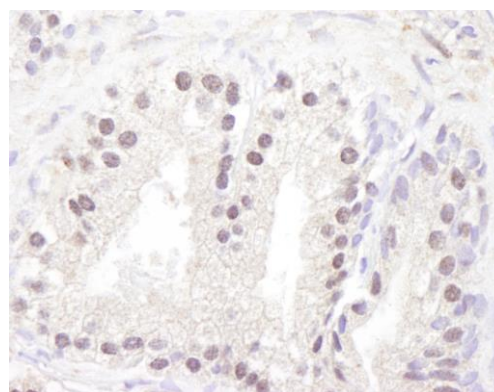


APPLICATIONS	WB, IP, IHC
SPECIES REACTIVITY	Human
AMOUNT	100 µl
CONCENTRATION	1000 µg/ml
STORAGE/SHELF LIFE	2 – 8° C / 1 year from date of receipt
PHYSICAL STATE	Liquid
BUFFER	Tris-citrate/phosphate buffer, pH 7 to 8 containing 0.09% Sodium Azide
ISOTYPE	IgG
ORIGIN	USA
PRODUCTION PROCEDURES	<p>Antibody was affinity purified using an epitope specific to MAD2 immobilized on solid support.</p> <p>The epitope recognized by A300-299A maps to a region between residues 2550 and 2600 of human ataxia telangiectasia mutated using the numbering given in SwissProt entry Q13315 (GeneID 472).</p> <p>Immunoglobulin concentration was determined by extinction coefficient: absorbance at 280 nm of 1.4 equals 1.0 mg of IgG.</p>
APPLICATIONS	<p>Centrifuge tube to remove product from lid. Optimal working dilutions should be determined experimentally by the investigator. Prepare working dilution immediately before use.</p> <p>Western Blot 1:5,000 – 1:25,000</p> <p>Immunoprecipitation 3 – 7 µg/mg lysate</p> <p>Immunohistochemistry 1:500 – 1:2,000. Epitope retrieval is not recommended.</p>
APPLICATION NOTES	<p>Western blot of immunoprecipitates performed using Normal Pig Serum (Cat. No. S100-020), Goat anti-Rabbit Light Chain HRP Conjugate (Cat. No. A120-113P) and 3-8% SDS-PAGE (link to IP-western blot protocol in Additional Info section below).</p> <p>Western blot of lysates performed using standard western blot reagents and 3-8% SDS-PAGE.</p>
IHC HUMAN CONTROLS	Prostate
ADDITIONAL INFO	<p>https://www.bethyl.com/product/A300-299A</p> <p>Use the link above to view SDS, a current list of citations, and other product specific information.</p> <p>IP-western blot protocol: https://www.bethyl.com/content/protocol_IP_WB</p>

This document certifies that this product has met all of the quality control standards defined by Bethyl Laboratories, Inc.
Eric McIntush, PhD | Chief Scientific Officer Date: June 24, 2019



Detection of human ATM by western blot and immunoprecipitation. *Samples:* A) Whole cell lysate (50 µg) from human L-40 (WT) or AT-59 (AT) cells. B) Whole cell lysate (1 mg) from WT cells. *Antibody:* Affinity purified rabbit anti-ATM antibody BL706 (Cat. No. A300-299A) used at the indicated concentrations for WB and at 0.5 µg/mg lysate for IP. immunoprecipitatesd ATM was blotted with a monoclonal antibody to ATM. *Detection:* Chemiluminescence with an exposure time of 30 seconds.



Detection of human ATM by immunohistochemistry. *Sample:* FFPE section of human prostate-nodular hypertrophy. *Antibody:* Affinity purified rabbit anti-ATM (Cat. No. A300-299A) used at a dilution of 1:1,000 (1 µg/ml). *Detection:* DAB