

FOXO1a Antibody

Rabbit Polyclonal

Antigen Affinity Purified

Protein ID Q12778

Catalog No. A300-297A

GeneID 2308

Lot No. A300-297A-4



APPLICATIONS	WB, IP
SPECIES REACTIVITY	Human
PRESUMED REACTIVITY	Based on 100% sequence identity, this antibody is predicted to react with Mouse, Rat, Bovine and Pig
AMOUNT	100 µl
CONCENTRATION	1000 µg/ml
STORAGE/SHELF LIFE	2 - 8° C / 1 year from date of receipt
PHYSICAL STATE	Liquid
BUFFER	Tris-citrate/phosphate buffer, pH 7 to 8 containing 0.09% Sodium Azide
ISOTYPE	IgG
ORIGIN	USA
PRODUCTION PROCEDURES	Antibody was affinity purified using an epitope specific to FOXO1a immobilized on solid support.

The epitope recognized by A300-297A maps to a region between residues 600 and the C-terminus (residue 652) of human Forkhead Box O1a using the numbering given in Swiss-Prot entry Q12778 (GeneID 2308).

Immunoglobulin concentration was determined by extinction coefficient: absorbance at 280 nm of 1.4 equals 1.0 mg of IgG.

APPLICATIONS Centrifuge tube to remove product from lid. Optimal working dilutions should be determined experimentally by the investigator. Prepare working dilution immediately before use.

Western Blot 1:2,000 - 1:10,000

Immunoprecipitation 2 - 10 µg/mg lysate

APPLICATION NOTES Western blot of immunoprecipitates performed using Normal Pig Serum (Cat. No. S100-020), Goat anti-Rabbit Light Chain HRP Conjugate (Cat. No. A120-113P) and 4-8% SDS-PAGE (link to IP-western blot protocol in Additional Info section below).

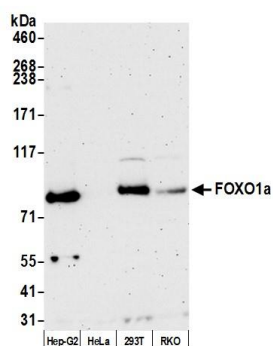
Western blot of lysates performed using standard western blot reagents and 4-8% SDS-PAGE.

ADDITIONAL INFO <https://www.bethyl.com/product/A300-297A>

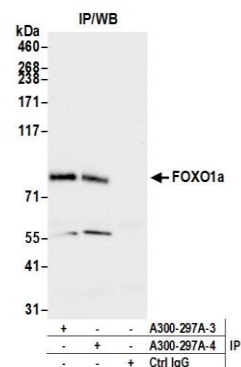
Use the link above to view SDS, a current list of citations, and other product specific information.

IP-western blot protocol https://www.bethyl.com/content/protocol_IP_WB

This document certifies that this product has met all of the quality control standards defined by Bethyl Laboratories, Inc.
Eric McIntush, PhD | Chief Scientific Officer Date: January 28, 2020



Detection of human FOXO1a by western blot. *Samples:* Whole cell lysate (50 μ g) from Hep-G2, HeLa, HEK293T, and RKO cells prepared using NETN lysis buffer. *Antibody:* Affinity purified Rabbit anti-FOXO1a antibody A300-297A (lot A300-297A-4) used for WB at 0.1 μ g/ml. *Detection:* Chemiluminescence with an exposure time of 3 minutes.



Detection of human FOXO1a by western blot of immunoprecipitates. *Samples:* Whole cell lysate (1.0 mg per IP reaction; 20% of IP loaded) from Hep-G2 cells prepared using NETN lysis buffer. *Antibodies:* Affinity purified Rabbit anti-FOXO1a antibody A300-297A (lot A300-297A-4) used for IP at 6 μ g per reaction. FOXO1a was also immunoprecipitated by a previous lot of this antibody (lot A300-297A-3). For blotting immunoprecipitated FOXO1a, A300-297A was used at 0.1 μ g/ml. *Detection:* Chemiluminescence with an exposure time of 30 seconds.