

hSET1 Antibody

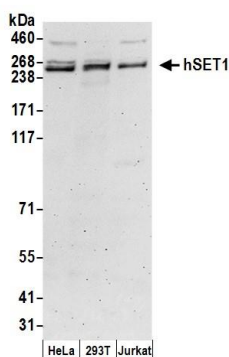
Rabbit Polyclonal

Antigen Affinity Purified Protein ID O15047
Catalog No. A300-290A GeneID 9739
Lot No. A300-290A-2

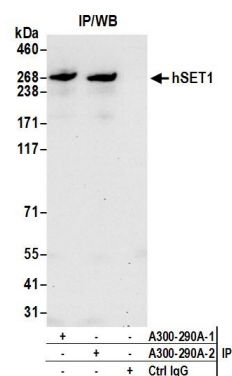


APPLICATIONS	WB, IP
SPECIES REACTIVITY	Human
PRESUMED REACTIVITY	Based on 100% sequence identity, this antibody is predicted to react with Mouse, Rat, Bovine, Dog, Horse, Guinea pig_10141, Pig, Panda, Orangutan, Monkey, Gorilla and Chimpanzee
AMOUNT	100 µl
CONCENTRATION	1000 µg/ml
STORAGE/SHELF LIFE	2 - 8° C / 1 year from date of receipt
PHYSICAL STATE	Liquid
BUFFER	Tris-citrate/phosphate buffer, pH 7 to 8 containing 0.09% Sodium Azide
ISOTYPE	IgG
ORIGIN	USA
PRODUCTION PROCEDURES	Antibody was affinity purified using an epitope specific to hSET1 immobilized on solid support. The epitope recognized by A300-290A maps to a region between residue 1675 and the C-terminus (residue 1709) of human hSET1 (KIAA0339) using the numbering given in TrEMBL entry O15047 (GeneID 9739). Immunoglobulin concentration was determined by extinction coefficient: absorbance at 280 nm of 1.4 equals 1.0 mg of IgG.
APPLICATIONS	Centrifuge tube to remove product from lid. Optimal working dilutions should be determined experimentally by the investigator. Prepare working dilution immediately before use. Western Blot 1:2,000 - 1:10,000 Immunoprecipitation 2 - 10 µg/mg lysate
APPLICATION NOTES	Western blot of immunoprecipitates performed using Normal Pig Serum (Cat. No. S100-020), Goat anti-Rabbit Light Chain HRP Conjugate (Cat. No. A120-113P) and 4-8% SDS-PAGE (link to IP-western blot protocol in Additional Info section below). Western blot of lysates performed using standard western blot reagents and 4-8% SDS-PAGE.
ADDITIONAL INFO	https://www.bethyl.com/product/A300-290A Use the link above to view SDS, a current list of citations, and other product specific information. IP-western blot protocol: https://www.bethyl.com/content/protocol_IP_WB

This document certifies that this product has met all of the quality control standards defined by Bethyl Laboratories, Inc.
Eric McIntush, PhD | Chief Scientific Officer Date: June 21, 2019



Detection of human hSET1 by western blot. *Samples:* Nuclear extract (50 µg) from HeLa, HEK293T, and Jurkat cells. *Antibody:* Affinity purified rabbit anti-hSET1 antibody A300-290A (lot A300-290A-2) used for WB at 0.1 µg/ml. *Detection:* Chemiluminescence with an exposure time of 3 minutes.



Detection of human hSET1 by western blot of immunoprecipitates. *Samples:* Nuclear extract (1 mg for IP; 20% of IP loaded) from HEK293T cells. *Antibodies:* Affinity purified rabbit anti-hSET1 antibody A300-290A (lot A300-290A-2) used for IP at 6 µg per reaction. hSET1 was also immunoprecipitated by a previous lot of this antibody A300-290A-1. For blotting immunoprecipitated hSET1, A300-289A was used at 1 µg/ml. *Detection:* Chemiluminescence with an exposure time of 30 seconds.