

hSET1 Antibody

Rabbit Polyclonal

Antigen Affinity Purified

Protein ID O15047

Catalog No. A300-289A

GeneID 9739

Lot No. A300-289A-7



APPLICATIONS	WB, IP
SPECIES REACTIVITY	Human, Mouse
AMOUNT	100 µl
CONCENTRATION	1000 µg/ml
STORAGE/SHELF LIFE	2 – 8° C / 1 year from date of receipt
PHYSICAL STATE	Liquid
BUFFER	Tris-citrate/phosphate buffer, pH 7 to 8 containing 0.09% Sodium Azide
ISOTYPE	IgG
ORIGIN	USA
PRODUCTION PROCEDURES	Antibody was affinity purified using an epitope specific to hSET1 immobilized on solid support.

The epitope recognized by A300-289A maps to a region between residues 1200 and 1250 of human hSET1 (KIAA0339) using the numbering given in TrEMBL entry O15047 (GeneID 9739).

Immunoglobulin concentration was determined by extinction coefficient: absorbance at 280 nm of 1.4 equals 1.0 mg of IgG.

APPLICATIONS Centrifuge tube to remove product from lid. Optimal working dilutions should be determined experimentally by the investigator. Prepare working dilution immediately before use.

Western Blot 1:10,000 – 1:25,000

Immunoprecipitation 2 – 10 µg/mg lysate

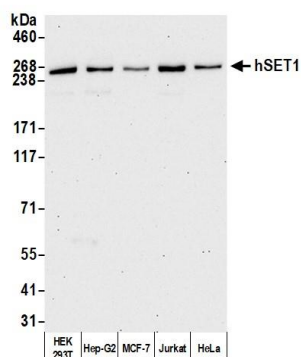
IHC HUMAN CONTROLS Breast Carcinoma, Ovarian Carcinoma, Prostate

ADDITIONAL INFO <https://www.bethyl.com/product/A300-289A>

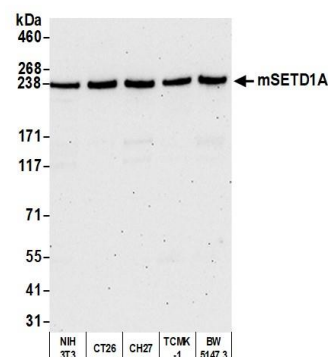
Use the link above to view SDS, a current list of citations, and other product specific information.

IP-western blot protocol: https://www.bethyl.com/content/protocol_IP_WB

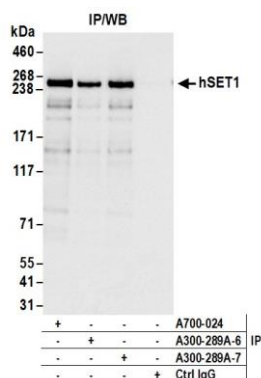
This document certifies that this product has met all of the quality control standards defined by Bethyl Laboratories, Inc.
Eric McIntush, PhD | Chief Scientific Officer Date: June 8, 2020



Detection of human hSET1 by western blot. *Samples:* Whole cell lysate (15 µg) from HEK293T, Hep-G2, MCF-7, Jurkat, and HeLa cells prepared using NETN lysis buffer. *Antibody:* Affinity purified rabbit anti-hSET1 antibody A300-289A (lot A300-289A-7) used for WB at 0.04 µg/ml. *Detection:* Chemiluminescence with an exposure time of 30 seconds.



Detection of mouse SETD1A by western blot. *Samples:* Whole cell lysate (10 µg) from NIH 3T3, CT26, CH27, TCMK-1, and BW5147.3 cells prepared using NETN lysis buffer. *Antibody:* Affinity purified rabbit anti-mSETD1A antibody A300-289A (lot A300-289A-7) used for WB at 0.04 µg/ml. *Detection:* Chemiluminescence with an exposure time of 75 seconds.



Detection of human hSET1 by western blot of immunoprecipitates. *Samples:* Whole cell lysate (1.0 mg per IP reaction; 20% of IP loaded) from HEK293T cells prepared using NETN lysis buffer. *Antibodies:* Affinity purified rabbit anti-hSET1 antibody A300-289A (lot A300-289A-7) used for IP at 6 µg per reaction. hSET1 was also immunoprecipitated by a previous lot of this antibody (lot A300-289A-6) and rabbit anti-hSET1 recombinant monoclonal antibody A700-024. For blotting immunoprecipitated hSET1, A700-024 was used at dilution of 1:1,000. *Detection:* Chemiluminescence with an exposure time of 3 seconds.