

Bcl-xL Antibody

Rabbit Polyclonal

Antigen Affinity Purified

Protein ID Q07817

Catalog No. A300-284A

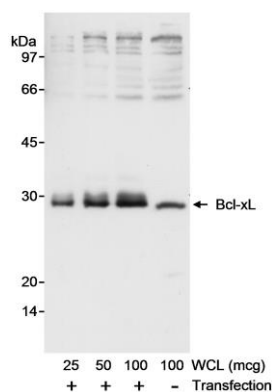
GeneID 598

Lot No. A300-284A-1



APPLICATIONS	WB
SPECIES REACTIVITY	Human
PRESUMED REACTIVITY	Based on 100% sequence identity, this antibody is predicted to react with Mouse, Rat and Pig
AMOUNT	100 µl
CONCENTRATION	1000 µg/ml
STORAGE/SHELF LIFE	2 – 8° C / 1 year from date of receipt
PHYSICAL STATE	Liquid
BUFFER	Tris-citrate/phosphate buffer, pH 7 to 8 containing 0.09% Sodium Azide
ISOTYPE	IgG
ORIGIN	USA
PRODUCTION PROCEDURES	<p>Antibody was affinity purified using an epitope specific to Bcl-xL immobilized on solid support.</p> <p>The epitope recognized by A300-284A maps to a region between residues 1 and 50 of human BCL2-like 1 using the numbering given in SwissProt entry Q07817 (GeneID 598).</p> <p>Immunoglobulin concentration was determined by extinction coefficient: absorbance at 280 nm of 1.4 equals 1.0 mg of IgG.</p>
APPLICATIONS	<p>Centrifuge tube to remove product from lid. Optimal working dilutions should be determined experimentally by the investigator. Prepare working dilution immediately before use.</p> <p>Western Blot 1:10,000 – 1:25,000</p>
APPLICATION NOTES	Western blot of lysates performed using standard western blot reagents and 4–20% SDS-PAGE.
ADDITIONAL INFO	<p>https://www.bethyl.com/product/A300-284A</p> <p>Use the link above to view SDS, a current list of citations, and other product specific information.</p>

This document certifies that this product has met all of the quality control standards defined by Bethyl Laboratories, Inc.
Eric McIntush, PhD | Chief Scientific Officer Date: June 21, 2019



Detection of human Bcl-xL by western blot. *Samples:* Whole cell lysate (WCL) from HEK293T cells that were mock transfected or transfected with an expression construct for Bcl-xL. ***Antibody:*** Affinity purified rabbit anti-Bcl-xL antibody (Cat. No. A300-284A) used at 0.04 µg/ml. ***Detection:*** Chemiluminescence.