

Rad6 Antibody

Rabbit Polyclonal

Antigen Affinity Purified

Protein ID P49459

Catalog No. A300-281A

GeneID 7319

Lot No. A300-281A-2



APPLICATIONS	WB, IHC
SPECIES REACTIVITY	Human, Mouse
PRESUMED REACTIVITY	Based on 100% sequence identity, this antibody is predicted to react with Rat, D. melanogaster, Bovine and Rabbit
AMOUNT	100 µl
CONCENTRATION	1000 µg/ml
STORAGE/SHELF LIFE	2 – 8° C / 1 year from date of receipt
PHYSICAL STATE	Liquid
BUFFER	Tris-citrate/phosphate buffer, pH 7 to 8 containing 0.09% Sodium Azide
ISOTYPE	IgG
ORIGIN	USA
PRODUCTION PROCEDURES	Antibody was affinity purified using an epitope specific to Rad6 immobilized on solid support.

The epitope recognized by A300-281A maps to the N-terminus of human ubiquitin-conjugating enzyme E2A using the numbering given in Swiss-Prot entry P49459 (GeneID 7319).

Immunoglobulin concentration was determined by extinction coefficient: absorbance at 280 nm of 1.4 equals 1.0 mg of IgG.

APPLICATIONS Centrifuge tube to remove product from lid. Optimal working dilutions should be determined experimentally by the investigator. Prepare working dilution immediately before use.

Western Blot 1:10,000 – 1:25,000

Immunohistochemistry 1:500 – 1:2,000. Epitope retrieval with citrate buffer pH6.0 is recommended for FFPE tissue sections.

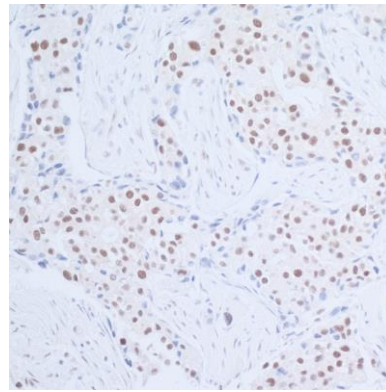
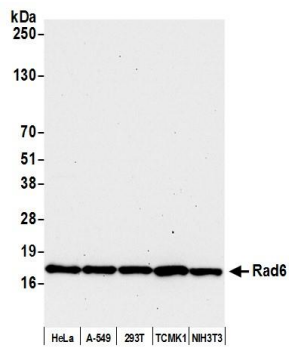
IHC HUMAN CONTROLS Breast Carcinoma, Ovarian Carcinoma, Prostate Carcinoma

IHC MOUSE CONTROLS Squamous Cell Carcinoma, Teratoma

ADDITIONAL INFO <https://www.bethyl.com/product/A300-281A>

Use the link above to view SDS, a current list of citations, and other product specific information.

This document certifies that this product has met all of the quality control standards defined by Bethyl Laboratories, Inc.
Eric McIntush, PhD | Chief Scientific Officer Date: April 23, 2020

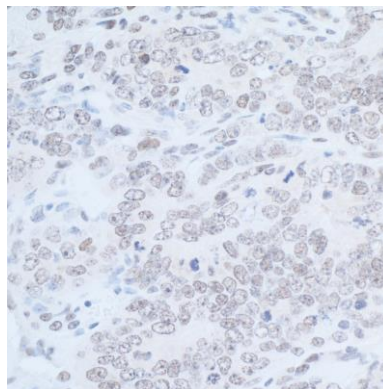


Detection of human and mouse Rad6 by western blot.

Samples: Whole cell lysate (50 μ g) from HeLa, A-549, HEK293T, TCMK-1, and NIH 3T3 cells prepared using NETN lysis buffer. *Antibody:* Affinity purified rabbit anti-Rad6 antibody A300-281A (lot A300-281A-2) used for WB at 0.04 μ g/ml. *Detection:* Chemiluminescence with an exposure time of 30 seconds.

Detection of human Rad6 by immunohistochemistry.

Sample: FFPE section of human lung carcinoma. *Antibody:* Affinity purified rabbit anti-Rad6 (Cat. No. A300-281A lot 2) used at 1:1,000 (1 μ g/ml). *Detection:* DAB



Detection of mouse Rad6 by immunohistochemistry.

Sample: FFPE section of mouse teratoma. *Antibody:* Affinity purified rabbit anti-Rad6 (Cat. No. A300-281A lot 2) used at 1:1,000 (1 μ g/ml). *Detection:* DAB