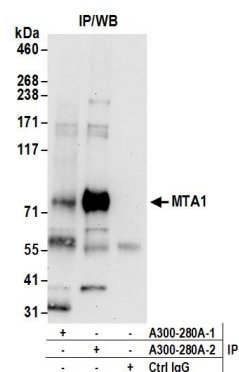


Detection of human and mouse MTA1 by western blot.

Samples: Whole cell lysate (50 µg) from HeLa, HEK293T, and mouse NIH 3T3 cells prepared using NETN lysis buffer.

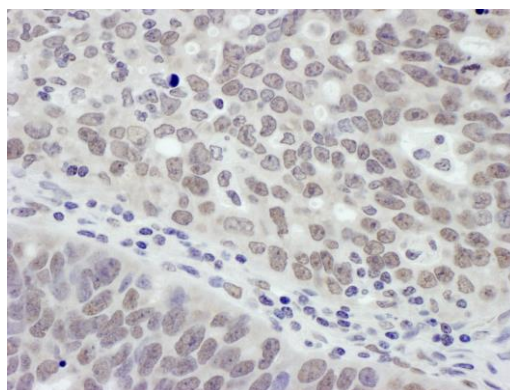
Antibody: Affinity purified rabbit anti-MTA1 antibody A300-280A (lot A300-280A-2) used for WB at 0.1 µg/ml.

Detection: Chemiluminescence with an exposure time of 30 seconds.



Detection of human MTA1 by western blot of immunoprecipitates.

Samples: Whole cell lysate (0.5 or 1.0 mg per IP reaction; 20% of IP loaded) from HeLa cells prepared using NETN lysis buffer. *Antibodies:* Affinity purified rabbit anti-MTA1 antibody A300-280A (lot A300-280A-2) used for IP at 6 µg per reaction. MTA1 was also immunoprecipitated by rabbit anti-MTA1 antibody A300-280A-1. For blotting immunoprecipitated MTA1, A300-280A was used at 1 µg/ml. *Detection:* Chemiluminescence with an exposure time of 30 seconds.



Detection of human MTA1 by immunohistochemistry.

Sample: FFPE section of human ovarian carcinoma.

Antibody: Affinity purified rabbit anti-MTA1 (Cat. No. A300-280A Lot2) used at a dilution of 1:1,000 (1 µg/ml).

Detection: DAB