

PCNA Antibody

Rabbit Polyclonal

Antigen Affinity Purified

Protein ID P12004

Catalog No. A300-277A

GeneID 5111

Lot No. A300-277A-2



APPLICATIONS	WB, IP, IHC, IHC-IF
SPECIES REACTIVITY	Human
PRESUMED REACTIVITY	Based on 100% sequence identity, this antibody is predicted to react with Rat and Bovine
AMOUNT	100 µl
CONCENTRATION	1000 µg/ml
STORAGE/SHELF LIFE	2 – 8° C / 1 year from date of receipt
PHYSICAL STATE	Liquid
BUFFER	Tris-citrate/phosphate buffer, pH 7 to 8 containing 0.09% Sodium Azide
ISOTYPE	IgG
ORIGIN	USA
PRODUCTION PROCEDURES	Antibody was affinity purified using an epitope specific to PCNA immobilized on solid support.

The epitope recognized by A300-277A maps to a region between residue 225 and the C-terminus (residue 261) of human proliferating cell nuclear antigen using the numbering given in SwissProt entry P12004 (GeneID 5111).

Immunoglobulin concentration was determined by extinction coefficient: absorbance at 280 nm of 1.4 equals 1.0 mg of IgG.

APPLICATIONS Centrifuge tube to remove product from lid. Optimal working dilutions should be determined experimentally by the investigator. Prepare working dilution immediately before use.

Western Blot	1:5,000 – 1:20,000
Immunoprecipitation	2 – 10 µg/mg lysate
Immunohistochemistry	1:2,000 – 1:10,000. Epitope retrieval with citrate buffer pH 6.0 is recommended for FFPE tissue sections.
Immunofluorescence (IHC)	1:1,000 – 1:5,000

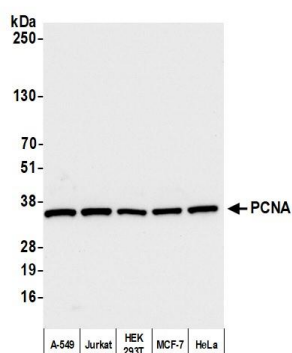
IHC HUMAN CONTROLS Breast Carcinoma, Colon Carcinoma, Non-Small Cell Lung Cancer, Ovarian Carcinoma, Prostate Carcinoma, Stomach Adenocarcinoma, Testicular Seminoma

IHC MOUSE CONTROLS Renal Cell Carcinoma, Teratoma

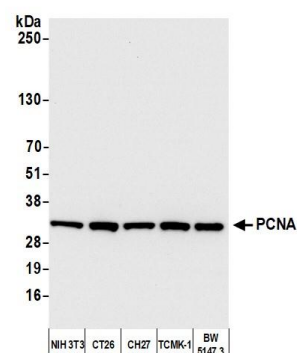
ADDITIONAL INFO <https://www.bethyl.com/product/A300-277A>

Use the link above to view SDS, a current list of citations, and other product specific information.
IP-western blot protocol: https://www.bethyl.com/content/protocol_IP_WB

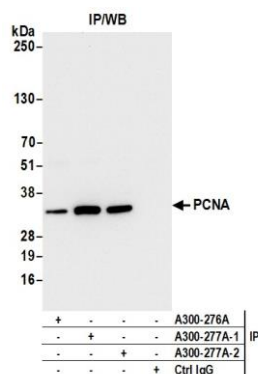
This document certifies that this product has met all of the quality control standards defined by Bethyl Laboratories, Inc.
Brian McWilliams, PhD Date: July 9, 2021



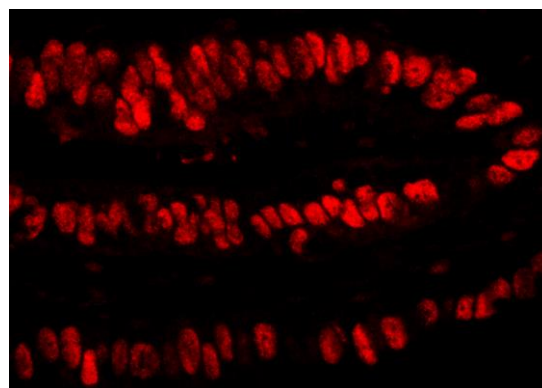
Detection of human PCNA by western blot. *Samples:* Whole cell lysate (10 µg) from A-549, Jurkat, HEK293T, MCF-7, and HeLa cells prepared using NETN lysis buffer. *Antibody:* Affinity purified rabbit anti-PCNA antibody (A300-277A lot 2) used for WB at 0.1 µg/ml. *Detection:* Chemiluminescence with an exposure time of 3 seconds.



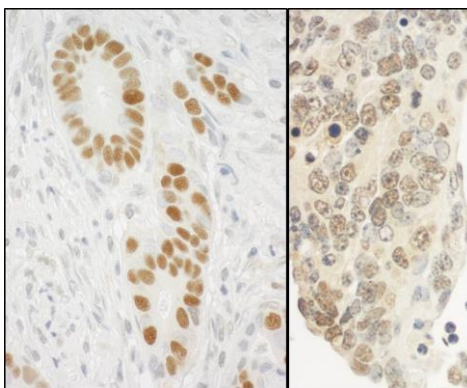
Detection of mouse PCNA by western blot. *Samples:* Whole cell lysate (10 µg) from NIH 3T3, CT26, CH27, TCMK-1, and BW5147.3 cells prepared using NETN lysis buffer. *Antibody:* Affinity purified rabbit anti-PCNA antibody (A300-277A lot 2) used for WB at 0.1 µg/ml. *Detection:* Chemiluminescence with an exposure time of 3 seconds.



Detection of human PCNA by western blot of immunoprecipitates. *Samples:* Whole cell lysate (1.0 mg per IP reaction; 5% of IP loaded) from HEK293T cells prepared using NETN lysis buffer. *Antibodies:* Affinity purified rabbit anti-PCNA antibody (A300-277A lot 2) used for IP at 6 µg per reaction. PCNA was also immunoprecipitated by a previous lot of this antibody (A300-277A lot 1) and a second antibody against a different epitope of PCNA (A300-276A). For blotting immunoprecipitated PCNA, A300-277A was used at 0.1 µg/ml. *Detection:* Chemiluminescence with an exposure time of 3 seconds.



Detection of human PCNA by immunohistochemistry. *Sample:* FFPE section of human stomach carcinoma. *Antibody:* Affinity purified rabbit anti-PCNA (Cat. No. A300-277A Lot1) used at a dilution of 1:4,000 (0.25 µg/ml). *Detection:* Red-fluorescent goat anti-rabbit IgG-heavy and light chain cross-adsorbed Antibody DyLight® 594 Conjugated used at a dilution of 1:100.



Detection of human and mouse PCNA by immunohistochemistry. *Sample:* FFPE section of human stomach carcinoma (left) and mouse teratoma (right). *Antibody:* Affinity purified rabbit anti-PCNA (Cat. No. A300-277A Lot1) used at a dilution of 1:10,000 (0.1 µg/ml). *Detection:* DAB